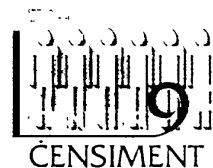


ĊENSIMENT TAL-POPOLAZZJONI U TAD - DJAR 1 9 9 5

IKTEB L-ISEM U L-KUNJOM TAL-PERSUNA TA' RIFERENZA U L-INDIRIZZ TAD-DAR ENTER THE NAME AND SURNAME OF THE REFERENCE PERSON, AND THE HOUSEHOLD ADDRESS	
L-Isem / Name	
Il-Kunjom / Surname	
In-numru tad-dar House No.	L-isem tad-dar House name
It-triq / Street	
Il-lokalita' / Town	Kodici postali / Postcode

GHALL-UZU UFFIĊĠJALI BISS FOR OFFICIAL USE ONLY		
Numru tal-lokalita' / Locality No.		
Numru tal-E.A. / E.A. No.		
Numru ta' l-enumrazzjoni Enumeration No.		
M	F	T

REKORD TA' MIN HADEM FUQ IL-KWESTJONARJU / QUESTIONNAIRE CONTROL RECORD			
	Numru ta' l-identita' / Identity Number	Firma / Initials	Data / Date
L-Enumeratur / Enumerator			
Is-Supervisor / Supervisor			
Il-Coder / Coder			
Il-Vetter / Vetter			
Id-Data Entry Operator Data Entry Operator			
Il-Verifikatur / Verifier			



KWESTJONARJU



GENERAL INFORMATION

1. All the information provided in this questionnaire should be correct as at midnight of the **26th November 1995**. This date is **Census Day**.

2. All the information provided in this questionnaire shall be kept **strictly confidential**.

3. The Census shall be carried out over a three-week period, commencing on Monday, the 20th November and ending on Sunday, the 10th December 1995. During this period an Enumerator from the Census Office will pay you, at least, two visits in order to assist you with the filling in of this questionnaire. The Enumerator will first call on you some time in the first week starting on Monday the 20th November, 1995. Then you can discuss with the Enumerator any problems which you might encounter in filling in this questionnaire.

4. The questionnaire has been compiled in a way that makes it relatively easy for households to fill it in themselves. However, households should seek the assistance of their area Enumerator in case of difficulties with all or part of this questionnaire.

5. Households who intend asking the Enumerator to complete the questionnaire on their behalf should have, at least, the following information readily available:

- ✎ a name list of all the members in their household;
- ✎ the Identity Cards of all the members in their household;
- ✎ the date of birth of any household members without an Identity Card;
- ✎ the year of marriage of any ever-married women in the household;
- ✎ the year of birth of every woman's first-born child;
- ✎ the average number of cigarettes smoked daily by smoking members of the household;
- ✎ the average number of wine glasses, beer bottles and tots of other spirits that are consumed by each household member every week;
- ✎ the number of hours that each household member normally works in his/her full-time and part-time job;
- ✎ the employer's name and address in respect of all employed household members;
- ✎ the gross average weekly or monthly income of each working household member;
- ✎ the year or estimated period in which the house was ready for habitation.

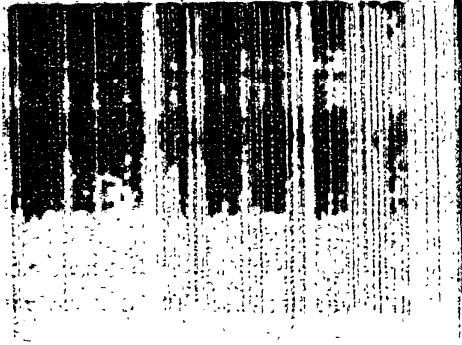
The reference person or a mature household member should assist the Enumerator with the filling in of this questionnaire.

KWESTIONARJU



ĊENSIMENT
TAL-POPOLAZZJONI
U TAD - DJAR
QUESTIONNAIRE
CENSUS OF
POPULATION
AND HOUSING

QUESTIONNAIRE



Matul it-tliet ġimgħat taċ-ċensiment, sejjer ikun hemm faċilita ta' servizz bil-FREEPHONE li permezz tiegħu kull minn jehtieg xi tagħrif dwar kull aspekt taċ-ċensiment, jingħata t-tagħrif u l-ghajnuna kollha li jitlob.

Ċempel meta trid bejn it-8.00am u d-9.00pm fuq:

FREEPHONE 0800 77 22 34
0800 77 22 35



During the three weeks of the census taking, two special helplines have been set up to assist in any difficulty which you might have.

Phone anytime between 8.00am and 9.00pm on:

FREEPHONE 0800 77 22 34
0800 77 22 35



<p>1 L-isem</p> <p>Il-lista li qiegħda tintalab hawnhekk għandha tkun skond il-qagħda tal-familja f'nofs il-lejl tas-26 ta' Novembru 1995</p> <p>Hu hsieb li l-lista tkun tinkludi lil-membri kollha tal-familja. Tinsieix xi trabi, ifal zghar, persuni li m'humiex membri tal-familja iżda li jgħixu hawn, u xi persuni oħra li qiegħdin barra minn Malta għal perjodu qasir jew l-isptar.</p> <p>Ibda' l-lista tiegħek:</p> <p>☐ jew b'isem ir-raġel jew il-mara fil-kaz ta' koppja mizzewga jew b'isem wiehed mill-membri ta' koppja li jgħixu flimkien</p> <p>☐ jew b'isem il-ġenitur/a fil-kaz ta' ġenitur/a wahdu/wehida li jgħix/għix m'uliedu/ha mhux mizzewgin.</p> <p>☐ inkella b'xi membru adult tal-familja li jgħix/għix hawn.</p> <p>L-ewwel persuna fil-lista tingharaf bhala l-persuna ta' riferenza</p> <p>Kompli l-lista tiegħek:</p> <p>☐ b'isem il-mara jew ir-raġel jew isem il-membri l-oħor ta' koppja li tgħix flimkien</p> <p>☐ bl-ulied mhux mizzewgin tal-persuna numru 1.</p> <p>☐ b'xi persuni oħra, relatati jew le, mal-persuna numru 1.</p> <p>KUNJOMIJET</p> <p>Tiklibx il-kunjomijet tal-membri tal-familja jekk dawn huma l-istess bħal tal-persuna numru 1. Iżda jekk hawnhekk toqgħod persuna li għandha kunjomha differenti minn dak tal-persuna numru 1, iktieb kunjomha wkoll</p> <hr/> <p>1. Name</p> <p>The list being requested here should be as at mid-night of Sunday, the 26th November 1995.</p> <p>Ensure that your list includes all the household members who usually live here. Do not forget infants, small children, non-family persons who usually live here and any persons who may, at present, be on a vacation or a business trip or in hospital.</p> <p>Begin your list with:</p> <p>☐ either the husband, wife or either partner of a couple living together.</p> <p>☐ the parent where one parent lives with his/her never married son(s) or daughter(s)</p> <p>☐ if neither of the above applies, begin with any adult member living here</p> <p>The first person in the list will be the reference person.</p> <p>Continue your list with:</p> <p>☐ the wife, husband or other partner of a couple living together.</p> <p>☐ the never married children of person 1.</p> <p>☐ any other persons, related or not, to person 1.</p> <p>SURNAMES</p> <p>In drawing up your list, do not write down any surnames if these are the same as that of person 1. However, if any person living here has a different surname from that of person 1, write down his/her surname as well.</p>	<p>5. L-istat legali taż-żwieġ</p> <p>Wegebd din il-mistoqsija billi tagħzel it-twegiba, mil-lista ta' hawn taht, li tiddekrni l-aħjar l-istat taż-żwieġ tiegħek. Imbagħad nizzel in-numru li hemm hdejn l-ghazla tiegħek.</p> <p>1 = givni/xebba 2 = mizzewweg/mizzewga 3 = separata 4 = zwiġ annuall/divorżjal iżda mhux mizzewweg/mizzewga mill-gdid 5 = armel/armila iżda mhux mizzewweg/mizzewga mill-gdid 6 = mizzewweg/mizzewga għal aktar minn darba</p> <p>Aqra sewwa dan il ġej:</p> <p>☐ dawk li qatt ma kienu mizzewga iżda li qiegħdin jgħixu ma' haddiehor bhala koppja għandhom jagħzlu l-twegiba numru 1 (givni/xebba)</p> <p>☐ persuna separata li qiegħda tgħix ma' persuna oħra bhala koppja għandha tagħzel it-twegiba numru 3 (separata)</p> <p>☐ armel jew armila li qiegħed/qiegħda jgħix/għix ma' persuna oħra bhala koppja għandu/għandha jagħzel/tagħzel it-twegiba numru 5 (armel/armila iżda mhux mizzewweg/mizzewga mill-gdid).</p> <hr/> <p>5. Legal Marital Status</p> <p>Answer this question by choosing the alternative from the following list that best describes your legal Marital Status. Then enter the number against the chosen alternative in the space provided</p> <p>1 = Single (never married) 2 = Married 3 = Separated 4 = Annulled/Divorced but not re-married 5 = Widowed, but not re-married 6 = Re-married</p> <p>Please note:</p> <p>☐ A never married person who is cohabiting with another should be denoted as <i>single (alternative 1)</i></p> <p>☐ A separated person who is cohabiting with another should be denoted as <i>separated (alternative 3)</i></p> <p>☐ A widowed person who is cohabiting with a partner should be denoted as a <i>widow/er here (alternative 5)</i></p>	<p>7. Ir-Relazzjoni mal-persuna numru 1</p> <p>Wegebd din il-mistoqsija billi tagħzel it-twegiba, mil-lista ta' hawn taht, li tiddekrni b'mod tajeb ir-relazzjoni tiegħek mal-persuna ta' riferenza. Imbagħad nizzel in-numru ta' hdejn l-ghazla tiegħek</p> <p>2 = zewg/mart il-persuna 1 3 = sieheb/sieħba tal-persuna 1 4 = iben/bint (jew iben/bint tar-rispett) tal-persuna 1 5 = iben/bint adottat/a tal-persuna 1 6 = missier/omm il-persuna 1 7 = iben/bint tar-rispett tal-persuna 1 8 = missier/omm tar-rispett tal-persuna 1 9 = hu/oht il-persuna 1 10 = hu/oht tar-rispett tal-persuna 1 11 = In-neputi/neputja tal-persuna 1 12 = ifel/ifa mrobbija mill-persuna 1 13 = qanb/a tal-persuna 1 14 = ma jgħix/għix mill-persuna 1</p> <hr/> <p>7. Relationship to person 1</p> <p>Answer this question by choosing the alternative from the following list that best describes your relationship to person number 1. Then enter the number of the chosen description in the space provided</p> <p>2 = Husband or wife of person 1 3 = Unmarried partner of person 1 4 = Son or daughter (including step child) of person 1 5 = Adopted child of person 1 6 = Father/mother of person 1 7 = Son/daughter-in-law of person 1 8 = Father/mother-in-law of person 1 9 = Brother/sister of person 1 10 = Brother/sister-in-law of person 1 11 = Grand-child of person 1 12 = Fostered child of person 1 13 = Other relative of person 1 14 = Not related to person 1</p>
--	---	--

<p>1. L-isem</p> <p>Nizzel isem il-persuni kollha li joqogħdu f'din il-dar. Ibdja b'isem il-persuna ta' riferenza.</p> <p>Il-persuna ta' riferenza għandha tingharaf bhala l-persuna numru 1.</p> <p>Ara n-noti fil-paġna opposta.</p> <p>1. Name</p> <p>Please give all the names of persons who usually live in this household beginning with the name of the reference person.</p> <p>The reference person is being designated as person number 1.</p> <p>See notes on opposite page.</p>	<p>NO</p>	<p>2. In-numru tal-karta ta' l-identita'</p> <p>Hawn taht, nizzel in-numru tal-karta ta' l-identita' ta' kull persuna</p> <p>Kull persuna 'l fuq minn 16 -il sena jista' jkollha karta ta' l-identita'</p> <p>2. I.D. Card No.</p> <p>Hereunder please insert the ID card number in respect of each listed person who is in possession of an Identity Card.</p> <p>Persons aged 16 years and over may be in possession of an ID card</p>	<p>3. Is-sess</p> <p>Din il-persuna hija raġel jew mara?</p> <p>Ikteb:</p> <p>1 = raġel 2 = mara</p> <p>3. Sex</p> <p>Is this person a male or a female?</p> <p>Enter:</p> <p>1 = Male 2 = Female</p>	<p>4. Id-data tat-twelid</p> <p>Hawn taht, aghi d-data tat-twelid ta' kull persuna.</p> <p>Eżempju:</p> <table border="1"> <tr> <td>Jum</td> <td>Xahar</td> <td>Sena</td> </tr> <tr> <td>08</td> <td>06</td> <td>1959</td> </tr> </table> <p>4. Date of Birth</p> <p>Hereunder insert each person's date of birth.</p> <p>Print:</p> <table border="1"> <tr> <td>DAY</td> <td>MONTH</td> <td>YEAR</td> </tr> <tr> <td>08</td> <td>06</td> <td>1959</td> </tr> </table> <table border="1"> <tr> <td>Jum</td> <td>Xahar</td> <td>Sena</td> </tr> <tr> <td>Day</td> <td>Month</td> <td>Year</td> </tr> </table>	Jum	Xahar	Sena	08	06	1959	DAY	MONTH	YEAR	08	06	1959	Jum	Xahar	Sena	Day	Month	Year	<p>5. Istat legali taż-żwieġ</p> <p>Aghi l-istat fil-haja ta' kull persuna 'l fuq minn 16 -il sena.</p> <p>Ara n-noti fil-paġna opposta</p> <p>5. Legal Marital Status</p> <p>For persons aged 16 or over, please give their marital status.</p> <p>See notes on opposite page.</p>	<p>6. Is-sena ta' l-ewwel żwieġ</p> <p>Aghi s-sena ta' l-ewwel żwieġ tegħek</p> <p>Din l-informazzjoni hija mitluba biss min-nisa li huma jew li kienu mizzewga</p> <p>6. Year of first Marriage</p> <p>Please enter the year of your first marriage.</p> <p>This information is required from ever-married women only.</p>	<p>7. Ir-relazzjoni mal-persuna numru 1</p> <p>X'relazzjoni għandha kull persuna li-nista' mai-persuna ta' riferenza, jgħidli mal-persuna numru 1?</p> <p>Ara n-noti fil-paġna opposta.</p> <p>7. Relationship to Person 1</p> <p>Please indicate the relationship of each listed person to person number 1.</p> <p>See notes on opposite page.</p>
Jum	Xahar	Sena																							
08	06	1959																							
DAY	MONTH	YEAR																							
08	06	1959																							
Jum	Xahar	Sena																							
Day	Month	Year																							
	1						1																		
	2																								
	3																								
	4																								
	5																								
	6																								

1 L-isem

Il-lista li qiegħda tintalab hawnhekk għandha t lejl tas-26 ta' Novembru 1995.

Hu hsieb li l-lista tkun tinkludi lil-membri kollh persuni li m'humx membri tal-familja iżda li j qegħdin barra minn Malta għal perjodu qasir j

Ibda' l-lista tiegħek:

- jew b'isem ir-ragel jew il-mara fil-kaz ta' ki miii-membri ta' koppja li għoxu flimkien.
- jew b'isem il-ġenitur/a fil-kaz ta' ġenitur/a m'uliedu/ha mhux mizzewġin.
- inkella b'xi membru adult tal-familja li għix L-ewwel persuna fil-lista tingharaf bhala l-pers

Kompli l-lista tiegħek:

- b'isem il-mara jew ir-ragel jew isem il-men
- bl-ulied mhux mizzewġin tal-persuna numi
- b'xi persuni oħra, relatati jew le, mal-persu

KUNJOMJIET

Tikkubx il-kunjomijiet tal-membri tal-familja jekk numru 1. Iżda jekk hawnhekk toqghod persun dak tal-persuna numru 1, iktib kunjomha wko

1. Name

The list being requested here should be as at November 1995.

Ensure that your list includes all the household not forget infants, small children, non-family persons who may, at present, be on a vacatio

Begin your list with:

- ☐ either the husband, wife or either partner
- ☐ the parent where one parent lives with his daughter(s).
- ☐ If neither of the above applies, begin with . The first person in the list will be the reference

Continue your list with:

- ☐ the wife, husband or other partner of a co
- ☐ the never married children of person 1.
- ☐ any other persons, related or not, to perso

SURNAMES

In drawing up your list, do not write down any that of person 1. However, if any person living that of person 1, write down his/her surname

8. Pajjiż it-twelid

Aghli t-tagħrif mitlub f'din it-taqsisma billi tagħzel mil-lista ta' hawn taht. Imbagħad nizzel in-numru ta' hdejn l-ghazla tiegħek.

- 1 = Malta
- 2 = ir-Renju Unit
- 3 = l-Italja
- 4 = Franza
- 5 = Il-Germanja
- 6 = Pajjiż iehor membru tal-Unjoni Ewropea
- 7 = Pajjiż Ewropew iehor
- 8 = L-Istati Uniti ta' l-Amenka
- 9 = Il-Kanada
- 10 = l-Awstralja
- 11 = l-Libja
- 12 = Pajjiż iehor li n'liux fil-lista ta' hawn taht

8. Country of Birth

Provide the information being requested in this section by selecting the appropriate alternative from the following list of countries and by entering the respective code in the space provided.

- 1 = Malta
- 2 = United Kingdom
- 3 = Italy
- 4 = France
- 5 = Germany
- 6 = Other EU - member country
- 7 = Other European country
- 8 = USA
- 9 = Canada
- 10 = Australia
- 11 = Libya
- 12 = Other country

9. Iċ-Ċittadinanza

Aghli t-tagħrif mitlub f'din it-taqsisma billi tagħzel mil-lista ta' hawn taht. Imbagħad nizzel in-numru ta' hdejn l-ghazla tiegħek.

- 1 = Maltija
- 2 = Ingliża
- 3 = Taljana
- 4 = Franciża
- 5 = Germaniża
- 6 = Ċittadinanza ta' pajjiż membru tal-Unjoni Ewropea
- 7 = Ċittadinanza ta' pajjiż Ewropew iehor
- 8 = Amerikana (USA)
- 9 = Kanadizza
- 10 = Awstraljana
- 11 = Libjana
- 12 = mingħajr ċittadinanza
- 13 = Ċittadinanza oħra

9. Citizenship

Provide the information being requested in this section by selecting the appropriate alternative from the following list and by entering the respective code in the space provided

- 1 = Maltese
- 2 = British
- 3 = Italian
- 4 = French
- 5 = German
- 6 = Other EU - member country citizenship
- 7 = Other European country citizenship
- 8 = American (USA)
- 9 = Canadian
- 10 = Australian
- 11 = Libyan
- 12 = Stateless
- 13 = Other citizenship

10. Il-kisba ta' ċittadinanza

Iċ-ċittadinanza hija n-nazzjonalita' legali ta' kull persuna. Persuna lista' li ksew iċ-ċittadinanza tagħna jew minnabba t-twelid jew għaliex tigi naturalizzata.

Iċ-ċittadinanza tinkiseb ukoll jew b'registrazzjoni, b'dikjarazzjoni, biz-zwieg jew b'mezzi oħra.

Aghli t-tagħrif mitlub f'din it-taqsisma billi tagħzel mil-lista ta' hawn taht. Imbagħad nizzel in-numru ta' hdejn l-ghazla tiegħek.

- 1 = mal-twelid
- 2 = naturalizzazzjoni
- 3 = registrazzjoni
- 4 = biz-zwieg
- 5 = b'dikjarazzjoni
- 6 = b'mezzi oħra

10. Citizenship obtained by

Citizenship is the legal nationality of each person that is obtained either by birth or by naturalisation

Citizenship, may also be obtained either by registration, by declaration, by marriage or by other means.

Provide the information being requested in this section by selecting the appropriate alternative from the following list and by entering the respective code in the space provided

- 1 = by birth
- 2 = by naturalisation
- 3 = by registration
- 4 = by marriage
- 5 = by declaration
- 6 = by other means

11. In-nazzjonalita' doppja

Aghli t-tagħrif mitlub f'din it-taqsisma billi tagħzel mil-lista ta' hawn taht. Imbagħad nizzel in-numru ta' hdejn l-ghazla tiegħek.

- 1 = Maltija
- 2 = Awstraljana
- 3 = Ingliża
- 4 = Amerikana (USA)
- 5 = Kanadizza
- 6 = Ċittadinanza oħra

11. Dual Nationality

Provide the information being requested in this section by choosing one of the following alternatives.

- 1 = Maltese
- 2 = Australian
- 3 = British
- 4 = American (USA)
- 5 = Canadian
- 6 = Other

Then ENTER the number against the chosen alternative in the space provided.

<p>1. L-isem Nizzel isem il-persuni kollha li joqogħdu f'dm il-dar. Ibdá' b'isem il-persuna ta' riferenza.</p> <p>Il-persuna ta' riferenza għandha tingħaraf bhala l-persuna numru 1.</p> <p>Ara n-noti fil-pagna opposta.</p> <p>1. Name Please give all the names of persons who usually live in this household beginning with the name of the reference person.</p> <p>The reference person is being designated as person number 1</p> <p>See notes on opposite page.</p>	<p>NO</p>	<p>8. Pajjiz it-twelid Aghti pajjiz it-twelid ta' kull persuna.</p> <p>Ara n-noti fil-pagna opposta</p> <p>8. Country of birth Please give the country where each person was born</p> <p>See notes on opposite page.</p>	<p>9. Iċ-Ċittadinanza Aghti c-ċittadinanza ta' kull persuna.</p> <p>Ara n-noti fil-pagna opposta.</p> <p>9. Citizenship Please enter each person's citizenship</p> <p>See notes on opposite page.</p>	<p>10. Il-K... taċ-ċittadinanza Kif inkisbet ic-ċittadinanza ta' kull persuna?</p> <p>Ara n-noti fil-pagna opposta.</p> <p>10. Citizenship obtained by How was such citizenship obtained?</p> <p>See notes on opposite page.</p>	<p>11. In-nazzjonalita' doppja Din il-persuna għandha ċittadinanza doppja?</p> <p>Jekk IVA, aghti n-nazzjonalita' l-ohra wkoll.</p> <p>Ara n-noti fil-pagna opposta.</p> <p>11. Dual Nationality If this person has dual nationality, ENTER his/her other nationality as well.</p> <p>See notes on opposite page.</p>
	1				
	2				
	3				
	4				
	5				
	6				

1 L-isem

Il-lista li qiegħda tintalab hawnhekk għandha lejl tas-26 ta' Novembru 1995.

Hu hsieb li l-lista tkun tinkludi lill-membri kollh persuni li m'humiex membri tal-familja izda li, qegħdin barra minn Malta għal perjodu qasir.

Ibda' l-lista tiegħek:

- jew b'isem ir-ragel jew il-mara fil-kaz ta' kull minn-membri ta' koppja li jghixu flimkien.
- jew b'isem il-ġenitur/a fil-kaz ta' ġenitur/a m'uliedu/ha mhux miżżewġin.
- inkella b'xi membru adult tal-familja li jgħi: L-ewwel persuna fil-lista tingharaf bhala l-per-

Kompli l-lista tiegħek:

- b'isem il-mara jew ir-ragel jew isem il-mer
- bl-ulied mhux miżżewġin tal-persuna num
- b'xi persuni oħra, relatati jew le, mal-pers-

KUNJOMIET

Tiktbx il-kunjomijiet tal-membri tal-familja jekk numru 1. Izda jekk hawnhekk toqgħod persun dak tal-persuna numru 1, iktieb kunjomha wk

1. Name

The list being requested here should be as at November 1995.

Ensure that your list includes all the household not forget infants, small children, non-family persons who may, at present, be on a vacat

Begin your list with:

- either the husband, wife or either partner
- the parent where one parent lives with his daughter(s)
- If neither of the above applies, begin with The first person in the list will be the referenc

Continue your list with:

- the wife, husband or other partner of a co
- the never married children of person 1.
- any other persons, related or not, to persc

SURNAMES

In drawing up your list, do not write down any that of person 1. However, if any person livin that of person 1, write down his/her surname

12. L-ulied

Il-tagħrif li qiegħed jintalab hawnhekk għandu jingħata mill-ommijiet kollha, miżżewġa jew le.

Għodd l-ulied kollha li twieldu hajjn, inklużi dawk li jew diga' mielu jew li qegħdin jghixu band'oħra.

Tgħoddx trabi li twieldu mejja

12. Children ever born

The information being requested here should be provided by all mothers, independently of their marital status.

Count all children including those who may have died since birth or who may now be living elsewhere

Do not include stillbirths

13. L-akbar wiid

Agħti s-sena tat-twelid ta' l-ewwel tarbija li twieldet hajja.

Tikkunsidrax xi tarbija li twieldet mejja.

Tinsieq l-ulied li jew laħqu mielu jew li qegħdin jghixu band'oħra.

13. Eldest Child

Give the year of birth of each woman's first-born child.

Stillbirths are not to be considered

Do not forget first children who may have died since birth or who may now be living elsewhere.

14. Ir-residenza regolari

Ir-residenza permanenti ta' persuna hija dik tejn il-persuna tghix b'mod regolari.

L-indirzz tad-dar għandu jtkies bhala r-residenza permanenti fil-kaz ta' haddiema u studenti li jghixu 'l bogħod mid-dar għal xi jiem fil-granet tax-xogħol jew ta' l-iskola

L-indirzz tad-dar għandu jtkies bhala r-residenza permanenti fil-kaz ta' persuna li tghix 'il bogħod mid-dar għal xi perjodu fil-gimgha.

14. Usual Place of Residence

The permanent address of a person is that where the person usually resides

For workers, students and children away from home on work and school days, the home address should be taken as the usual address.

For any person who lives away from home for part of the week, the home address should be taken as the usual address.

<p>1. L-isem</p> <p>Nizzel isem il-persuni kollha li joqogħdu f'din il-dar. Ibdja b'isem il-persuna ta' riferenza.</p> <p>Il-persuna ta' riferenza għandha tingħaraf bhala l-persuna numru 1.</p> <p>Ara n-noti fil-pagna opposta.</p> <p>1. Name</p> <p>Please give all the names of persons who usually live in this household beginning with the name of the reference person</p> <p>The reference person is being designated as person number 1</p> <p>See notes on opposite page.</p>	<p>NO</p>	<p>12. L-uliied</p> <p>Kemm -il tarbija qatt kellha din il-persuna?</p> <p>Dan it-tagħrif huwa mitlub min-nisa biss.</p> <p>Ara n-noti fil-pagna opposta.</p> <p>12. Children ever born</p> <p>How many children were ever born alive to this person?</p> <p>For women only.</p> <p>See notes on opposite page.</p>	<p>13. L-akbar wild</p> <p>Aghli s-sena tat-twelid ta' l-ewwel wild.</p> <p>Tqisx l-uliied irabi li twieldu mejta.</p> <p>Dan it-tagħrif huwa mitlub min-nisa biss.</p> <p>Ara n-noti fil-pagna opposta.</p> <p>13. Eldest Child</p> <p>Please enter the year when this person's first child was born.</p> <p>Do not consider stillbirths.</p> <p>For women only.</p> <p>See notes on opposite page.</p>	<p>14. Ir-residenza regolari</p> <p>L-indirizz li klibt fuq il-qoxra ta' dan il-kwestjonarju huwa l-indirizz regolari ta' din il-persuna?</p> <p>Ikteb: 1 = IVA jew 2 = LE fil-kolonna A</p> <p>Jekk wegħti LE, aghli l-indirizz regolari ta' kull persuna fil-kolonna B u aghli n-numru ta' l-jiem li kull persuna normalment tghaddi fl-indirizz ta' fuq il-qoxra fil-kolonna C.</p> <p>Ara n-noti fil-pagna opposta.</p> <p>14. Usual Place of Residence</p> <p>Is the address on the cover of this questionnaire, this person's usual address?</p> <p>Enter: 1 = YES or 2 = NO in column A</p> <p>If NO, specify usual address in column B and indicate the number of nights that this person normally spends at the address specified on the cover of this questionnaire in column C</p> <p>See notes on opposite page</p> <table border="1" data-bbox="673 898 1153 961"> <thead> <tr> <th data-bbox="673 898 738 919">A</th> <th data-bbox="738 898 1063 919">B</th> <th data-bbox="1063 898 1153 919">C</th> </tr> </thead> <tbody> <tr> <td data-bbox="673 919 738 961">1 or 2 1 jew 2</td> <td data-bbox="738 919 1063 961">L-indirizz regolari Usual Address</td> <td data-bbox="1063 919 1153 961">Il-jiem Nights</td> </tr> </tbody> </table>	A	B	C	1 or 2 1 jew 2	L-indirizz regolari Usual Address	Il-jiem Nights	<p>Kodiċi għall-14</p> <p>Għall-uzu ufficjali biss</p> <p>Takltx hawnhekk</p> <p>Codes for 14</p> <p>For official use only. Please do not fill in</p>	<p>15. L-Emigrant/ali rritorna't</p> <p>Qatt din il-persuna kienet emigrata u rritornat lejha Malta?</p> <p>Ikteb:</p> <p>1 = Iva</p> <p>2 = Le</p> <p>15. Returned Migrant</p> <p>Is this person a returned migrant?</p> <p>Enter:</p> <p>1 = Yes</p> <p>2 = No</p>	<p>16. Is-sena tar-ritorn</p> <p>F'kaz li din il-persuna kienet emigrata u rritornat, aghli s-sena ta' meta giet lura Malta għal kollox.</p> <p>16. Year of Return</p> <p>If this person is a returned migrant, give the year in which she/he returned permanently to Malta.</p>
A	B	C											
1 or 2 1 jew 2	L-indirizz regolari Usual Address	Il-jiem Nights											
	1												
	2												
	3												
	4												
	5												
	6												

1 L-isem

Il-lista li qiegħda tintalab hawnhekk għandha lejha tas-26 ta' Novembru 1995.

Hu hsieb li l-lista tkun tinkludi lil-membri kollha ta' persuni li m'humiex membri tal-familja iżda li qiegħdin barra minn Malta għal perjodu qasir.

Ibda' l-lista tiegħek:

- jew b'isem ir-ragel jew il-mara lil-kaz ta' k' milli-membri ta' koppja li jgħixu flimkien.
- jew b'isem il-ġenitur/a lil-kaz ta' ġenitur/a m'uliedu/ha mhux mizzewġin.
- inkella b'xi membru adult tal-familja li jgħix L-ewwel persuna fil-lista tingharaf b'halen l-persuni.

Kompli l-lista tiegħek:

- b'isem il-mara jew ir-ragel jew isem il-mer
- bl-ulied mhux mizzewġin tal-persuna num
- b'xi persuni oħra, relatati jew le, mal-persuni

KUNJOMIJIET

Tikkubx il-kunjomijiet tal-membri tal-familja jekk numru 1. Iżda jekk hawnhekk toqgħod persur dak tal-persuna numru 1, ikun kunjomna wac

1 Name

The list being requested here should be as at November 1995.

Ensure that your list includes all the household not forget infants, small children, non-family persons who may, at present, be on a vacatic

Begin your list with:

- either the husband, wife or either partner
- the parent where one parent lives with his daughter(s).
- If neither of the above applies, begin with the first person in the list will be the referenc

Continue your list with:

- the wife, husband or other partner of a co
- the never married children of person 1.
- any other persons, related or not, to persc

SURNAMES

In drawing up your list, do not write down any that of person 1. However, if any person livin; that of person 1, write down his/her surname.

17. Il-pajjiz minn fejn l-emigranti irritornaw

Aghni l-tagħrif millub f'din il-taqsisma billi tagħzel waħda mit-twegbiet ta' hawn taht. Imbagħad nizzel in-numru li hemm hdejn l-ghazla tiegħek.

- 1 = L-Awstralja
- 2 = L-Amerka (USA)
- 3 = il-Kanada
- 4 = Ir-Renju Unit
- 5 = L-Italja
- 6 = Franza
- 7 = il-Germanja
- 8 = Pajjiz Ewropew ieħor
- 9 = Pajjiz ieħor

17. Country from which migrant returned

Provide the information requested in this section by choosing any one of the following alternatives:

- 1 = Australia
- 2 = America (USA)
- 3 = Canada
- 4 = United Kingdom
- 5 = Italy
- 6 = France
- 7 = Germany
- 8 = Other European Country
- 9 = Other country

18. L-Indirizz sena ilu

(a) Wieġeb din il-mistoqsja billi l-ewwel tagħzel waħda mit-twegbiet ta' hawn taht:

- 1 = kien/et jgħix/tgħix fl-istess indirizz
- 2 = kien/et jgħix/tgħix fl-istess lokalkita iżda f'indirizz differenti
- 3 = kien/et jgħix/tgħix f'lokalkita differenti f'Malta
- 4 = kien/et jgħix/tgħix barra minn Malta

Nizzel in-numru ta' hdejn l-ghazla tiegħek fil-kolonna A ta' din it-taqsisma.

(b) Jekk it-twegiba kienet waħda mill-ghazlet bin-numri 3 jew 4, **ikteb** isem il-lokalkita' (jekk f'Malta jew f'Għawdex) jew isem il-pajjiz (jekk barra minn Malta) ta' fejn il-persuna kienet tgħix fl-ispazju indikat fil-kolonna B.

18. Usual Address One Year Ago

(a) In answering this question, choose first any one of the following alternatives:

- 1 = Lived at the same address.
- 2 = Lived in the same locality but at a different address
- 3 = Lived in a different locality in Malta.
- 4 = Lived abroad

Then enter the number against the chosen alternative in the space provided under column A.

(b) If either of the alternatives 3 and 4 is chosen **enter** the locality name (if in Malta and Gozo) or the country name (if abroad) in the appropriate space under column B.

19. L-Indirizz hames snin ilu

(a) Wieġeb din il-mistoqsja billi tagħzel waħda mit-twegbiet ta' hawn taht:

- 1 = kien/et jgħix/tgħix fl-istess indirizz
- 2 = kien/et jgħix/tgħix fl-istess lokalkita iżda f'indirizz differenti
- 3 = kien/et jgħix/tgħix f'lokalkita differenti f'Malta
- 4 = kien/et jgħix/tgħix barra minn Malta

Nizzel in-numru ta' hdejn l-ghazla tiegħek fil-kolonna A ta' din it-taqsisma.

(b) Jekk it-twegiba kienet waħda mill-ghazlet bin-numri 3 jew 4, **ikteb** isem il-lokalkita' (jekk f'Malta jew f'Għawdex) jew isem il-pajjiz (jekk barra minn Malta) ta' fejn il-persuna kienet tgħix fl-ispazju indikat fil-kolonna B.

19. Usual Address Five Years Ago

(a) In answering question number 19, choose any one of the following alternatives:

- 1 = Lived at the same address.
- 2 = Lived in the same locality but at a different address.
- 3 = Lived in a different locality in Malta.
- 4 = Lived abroad.

Then enter the number of the chosen alternative in the space provided.

(b) If either of the alternatives 3 and 4 is chosen **enter** the locality name (if in Malta and Gozo) or the country name (if abroad) in the appropriate space under column B.

<p>1. L-isem</p> <p>Nizzel isem il-persuni kolha li joqogħdu f'din il-dar. Ilda' b'isem il-persuna ta' riferenza.</p> <p>Il-persuna ta' riferenza għandha tingharaf bhala l-persuna numru 1.</p> <p>Ara n-noti fil-pagna opposta.</p> <p>1. Name</p> <p>Please give all the names of persons who usually live in this household beginning with the name of the reference person</p> <p>The reference person is being designated as person number 1</p> <p>See notes on opposite page.</p>	NO
	1
	2
	3
	4
	5
	6

<p>17. Il-pajjiż minn fejn l-emigranti rritornaw</p> <p>Jekk din il-persuna kienet emigrata u rritornat, nizzel il-pajjiż minn fejn irritornat.</p> <p>Ara n-noti fil-pagna opposta.</p> <p>17. Country from which Migrant returned</p> <p>If this person is a returned migrant, give the country from where he/she returned</p> <p>See notes on opposite page.</p>		<p>18. L-indirizz sena ilu</p> <p>Fejn kienet toqgħod din il-persuna sena ilu, jgħidli fis- 26 ta' Novembru 1994 ?</p> <p>Ara n-noti fil-pagna opposta.</p> <p>18. Usual Address One Year Ago</p> <p>Where did this person live one year ago, ie on the 26th November 1994?</p> <p>See notes on opposite page.</p>		<p>Kodiċi għad-18</p> <p>Għall-uzu ufficjali biss. Tiktibx hawnhekk.</p> <p>Codes for 18</p> <p>For official use only. Please do not fill in.</p>		<p>19. L-indirizz hames snin ilu</p> <p>Fejn kienet toqgħod din il-persuna hames snin ilu, jgħidli fis- 26 ta' Novembru 1990 ?</p> <p>Ara n-noti fil-pagna opposta.</p> <p>19. Usual Address Five Years Ago</p> <p>Where did this person live five years ago, ie on the 26th November 1990?</p> <p>See notes on opposite page.</p>		<p>Kodiċi għad-19</p> <p>Għall-uzu ufficjali biss. Tiktibx hawnhekk.</p> <p>Codes for 19</p> <p>For official use only. Please do not fill in.</p>	
A	B	A	B	A	B				
	<p>Il-lokalita' jekk f'Malta / Locality if in Malta</p> <p>Il-pajjiż jekk barra / Country if not in Malta</p>		<p>Il-lokalita' jekk f'Malta / Locality if in Malta</p> <p>Il-pajjiż jekk barra / Country if not in Malta</p>						
	<p>Il-lokalita' jekk f'Malta / Locality if in Malta</p> <p>Il-pajjiż jekk barra / Country if not in Malta</p>		<p>Il-lokalita' jekk f'Malta / Locality if in Malta</p> <p>Il-pajjiż jekk barra / Country if not in Malta</p>						
	<p>Il-lokalita' jekk f'Malta / Locality if in Malta</p> <p>Il-pajjiż jekk barra / Country if not in Malta</p>		<p>Il-lokalita' jekk f'Malta / Locality if in Malta</p> <p>Il-pajjiż jekk barra / Country if not in Malta</p>						
	<p>Il-lokalita' jekk f'Malta / Locality if in Malta</p> <p>Il-pajjiż jekk barra / Country if not in Malta</p>		<p>Il-lokalita' jekk f'Malta / Locality if in Malta</p> <p>Il-pajjiż jekk barra / Country if not in Malta</p>						
	<p>Il-lokalita' jekk f'Malta / Locality if in Malta</p> <p>Il-pajjiż jekk barra / Country if not in Malta</p>		<p>Il-lokalita' jekk f'Malta / Locality if in Malta</p> <p>Il-pajjiż jekk barra / Country if not in Malta</p>						
	<p>Il-lokalita' jekk f'Malta / Locality if in Malta</p> <p>Il-pajjiż jekk barra / Country if not in Malta</p>		<p>Il-lokalita' jekk f'Malta / Locality if in Malta</p> <p>Il-pajjiż jekk barra / Country if not in Malta</p>						

1 L-isem

Il-lista li qiegħda tintalab hawnhekk għandha lejha tas-26 ta' Novembru 1995.

Hu hsieb li l-lista tkun tinkludi lil-membri kollji persuni li m'humiex membri tal-familja iżda li qiegħdin barra minn Malta għal perjodu qasir

Ibda' l-lista tiegħek:

☐ jew b'isem ir-ragel jew il-mara fil-kaz ta' k mill-membri ta' koppja li jghixx flimkien.

☐ jew b'isem il-genitur/a fil-kaz ta' genitur/a m'uliedu/ha mhux mizzewgin

☐ inkella b'xi membru adult tal-familja li jgħi: L-ewwel persuna fil-lista tingharaf bhala l-pers-

Kompli l-lista tiegħek:

☐ b'isem il-mara jew ir-ragel jew isem il-mer

☐ bl-uleđ mhux mizzewgin tal-persuna num

☐ b'xi persuni oħra, relatati jew le, mal-pers-

KUNJOMIJIET

Tikkibx il-kunjomijiet tal-membri tal-familja jekk numru 1. Iżda jekk hawnhekk toqgħod persur dak tal-persuna numru 1, ikteb kunjomha wk

1. Name

The list being requested here should be as at November 1995.

Ensure that your list includes all the household not forget infants, small children, non-family persons who may, at present, be on a vacat

Begin your list with:

☐ either the husband, wife or either partner

☐ the parent where one parent lives with his daughter(s).

☐ If neither of the above applies, begin with The first person in the list will be the referenc

Continue your list with:

☐ the wife, husband or other partner of a co

☐ the never married children of person 1.

☐ any other persons, related or not, to pers

SURNAMES

In drawing up your list, do not write down any that of person 1. However, if any person livin that of person 1, write down his/her surname

20. Qari u kitba

Din il-mistoqsija tghodd għal dawk li għalqu l-10 snin jew aktar biss.

Persuna tinghad li taf taqra u tikteb jekk tkun kapaci taqra u tikteb sentenza qasira u sempliċi fuq il-hajja tagħha ta' kuljum.

20. Literacy

This question is intended for persons aged 10 years and over only.

Literacy is defined as the ability of a person both to read and write a short simple statement on his/her everyday life

21. Il-livell ta' l-edukazzjoni

Din il-mistoqsija tghodd għal dawk li għalqu s-16 -il sena jew aktar biss.

Il-livell ta' l-edukazzjoni jirreferen għal-livell l-aktar avanzat (komplet jew le) li persuna tkun lanqet fis-sistema edukattiva nazzjonali.

B'ex twiegeb il-mistoqsija numru 21, aghzel waħda mit-twegibiet ta' hawn taht li tispjega l-hajja il-livell ta' edukazzjoni mihuu minn kull persuna. Imbagħad nizzel in-numru ta' hdejn kull għazla.

- 1 = qatt ma marret skola
- 2 = ma temmitx liskola primarja
- 3 = temmet liskola primarja
- 4 = ma temmitx liskola sekondarja (general)
- 5 = temmet liskola sekondarja (general)
- 6 = ma temmitx liskola sekondarja (vokazzjonali)
- 7 = temmet liskola sekondarja (vokazzjonali)
- 8 = ma temmitx l-edukazzjoni terzjarja
- 9 = temmet l-edukazzjoni terzjarja
- 10 = ma temmitx l-istudju fil-livell post-gradwat
- 11 = temmet l-istudju fil-livell post-gradwat

21. Educational Attainment

This question is intended for persons aged 16 years and over only.

This refers to the most advanced level which a person has reached (completed or not) in the national educational system.

In answering question number 21, ENTER in the space provided the number from the following list that best describes the level reached by each respective person:

- 1 = No schooling
- 2 = Primary level not completed
- 3 = Primary level completed
- 4 = Secondary level not completed (general)
- 5 = Secondary level completed (general)
- 6 = Secondary level not completed (vocational)
- 7 = Secondary level completed (vocational)
- 8 = Tertiary level not completed
- 9 = Tertiary level completed
- 10 = Post-graduate level not completed
- 11 = Post-graduate level completed

22. Għarfien il-lingwi

Din il-mistoqsija tghodd għal dawk li għalqu l-10 snin jew aktar biss.

Ir-ringieli bin-numri mill-1 sad-9 il-mistoqsija 22 jirreferu għal-lista tal-lingwi ta' hawn taht li persuna tista' tkun taf titkellem tajjeb bihom. B'ex twiegeb din il-mistoqsija aghmel CIRKU madwar in-numru/i tal-lingwa/i li kull persuna taf titkellem tajjeb biha/bihom jew inkella madwar in-numru/i li juru z-zewg twegibiet l-oħra

- 1 = Il-Malti
- 2 = L-Ingliż
- 3 = Il-Taljan
- 4 = Il-Franciz
- 5 = Il-Germaniz
- 6 = L-Ispanjol
- 7 = L-Għarbi
- 8 = L-lingwa/oħra mhux immnizla hawn
- 9 = ma jtkellem/tikkellem b'ebda lingwa

☐ aghmel cirku madwar in-numru ta' kull twegiba li tapplika għal kull persuna

☐ persuni li kapaci jtkellmu l-lingwi oħra madwar dawk li huma jkollu għandhom jagħidu cirku madwar in-numru 9.

☐ Il-persuni li mhuma kapaci jtkellmu b'ebda lingwa minhabba xi dizabbiltà għandhom jagħidu cirku madwar in-numru 9.

22. Knowledge of languages

This question is intended for persons aged 10 years and over only.

The rows of numbers, from 1 to 9, in question 22 refer to the languages and the other alternatives in the list that follows. In answering this question, CIRCLE the number/s relative to the language/s that each person is able to speak fluently.

- 1 = Maltese
- 2 = English
- 3 = Italian
- 4 = French
- 5 = German
- 6 = Spanish
- 7 = Arabic
- 8 = Other language/s
- 9 = Cannot speak any language/s

☐ If more than one alternative applies to any one person, each of the respective numbers should be circled.

☐ Persons who speak any other language/s apart from those listed above should select code 8

☐ Persons who cannot speak any language whatsoever due to some form of disability should select code 9

<p>1. L-isem</p> <p>Niżżel isem il-persuni kollha li joqogħdu f'din il-dar. Ibdja b'isem il-persuna ta' riferenza.</p> <p>Il-persuna ta' riferenza għandha tingharaf bhala l-persuna numru 1.</p> <p>Ara n-noti fil-pagna opposta.</p> <hr/> <p>1. Name</p> <p>Please give all the names of persons who usually live in this household beginning with the name of the reference person.</p> <p>The reference person is being designated as person number 1.</p> <p>See notes on opposite page.</p>	<p>NO</p>	<p>20. Qari u kitba</p> <p>Din il-persuna taf taqra u tktieb?</p> <p>Ikteb:</p> <p>1 = Iva</p> <p>2 = Le</p> <p>Ara n-noti fil-pagna opposta.</p> <p>Għal persuni ta' 10 snin jew aktar biss.</p> <hr/> <p>20. Literacy</p> <p>Is this person able to read and write?</p> <p>Enter:</p> <p>1 = Yes</p> <p>2 = No</p> <p>See notes on opposite page.</p> <p>For persons aged 10 years and over only.</p>	<p>21. Il-livell ta' l-edukazzjoni</p> <p>X'livell ta' edukazzjoni laqgħet din il-persuna?</p> <p>Dahhal in-numru ta' l-ghazla tiegħek mit-tabella li tidher fil-pagna opposta.</p> <p>Ara n-noli fil-pagna opposta.</p> <p>Għal persuni ta' 16 -il sena jew aktar.</p> <hr/> <p>21. Educational Attainment</p> <p>What level of education has this person ever attained?</p> <p>Enter the applicable number from the table on the opposite page</p> <p>See notes on opposite page.</p> <p>For persons aged 16 years and over only.</p>	<p>22. Għarfien il-lingwi</p> <p>Liema huma dawk il-lingwi li din il-persuna kapaci tikkellem tajjeb bihom? Qabel twiegeb, aqra sewwa l-ispejja li hemm fil-pagna opposta.</p> <p>Għal persuni ta' 10 enin jew aktar biss.</p> <hr/> <p>22. Knowledge of Languages</p> <p>What language/s can this person speak well enough to conduct a conversation? Read full explanation on opposite page.</p> <p>Please circle all the numbers that apply.</p> <p>For persons aged 10 years and over only.</p>									
	1			1	2	3	4	5	6	7	8	9	
	2			1	2	3	4	5	6	7	8	9	
	3			1	2	3	4	5	6	7	8	9	
	4			1	2	3	4	5	6	7	8	9	
	5			1	2	3	4	5	6	7	8	9	
	6			1	2	3	4	5	6	7	8	9	

<p>1. L-isem</p> <p>Nizzel isem il-persuni kollha li joqogħdu f'din il-dar. Ibdha' b'isem il-persuna ta' riferenza.</p> <p>Il-persuna ta' riferenza għandha tingharaf b'hal l-persuna numru 1.</p> <p>Ara n-noti fil-paġna opposta.</p> <p>1. Name</p> <p>Please give all the names of persons who usually live in this household beginning with the name of the reference person.</p> <p>The reference person is being designated as person number 1</p> <p>See notes on opposite page</p>	<p>NO</p>	<p>23. Il-kwalifiki</p> <p>Indika l-ogħla kwalifika, certifikat, diploma jew grad universitarju, li din il-persuna qatt kisbet.</p> <p>Aghzel u iktcb numru mit-tabella fil-paġna opposta</p> <p>Għal persuni ta' 16 -il sena jew aktar biss.</p> <hr/> <p>23. Educational Qualifications</p> <p>Indicate the highest certificate, diploma or degree which this person has ever attained</p> <p>Enter a number from the table on the opposite page</p> <p>For persons aged 16 years and over only.</p>	<p>24. Dizabbiltajiet</p> <p>Din il-persuna hija limitata fil-hajja ta' kuljum jew inkella fix-xogħol li tista' tagħmel minhabba nuqqas ta' saħha u/jew kundizzjonijiet fiżiċi jew mentali fit-tul?</p> <p>Għal kull parti ta' din il-mistoqsija iktcb:</p> <p>1 = Iva 2 = Le 3 = Ma japplikax</p> <hr/> <p>24. Activity Limitations</p> <p>Is this person limited in his/her daily activities or work he/she can do because of a long-term physical condition, mental condition or health problem?</p> <p>Answer each sub-question and ENTER:</p> <p>1 = Yes 2 = No 3 = Not applicable</p> <table border="1" data-bbox="695 907 1013 953"> <tr> <td>Fid-dar? At Home?</td> <td>L-iskola jew fix-xogħol? At School/Work?</td> <td>F'attivitajiet oħra? In other activities?</td> </tr> </table>	Fid-dar? At Home?	L-iskola jew fix-xogħol? At School/Work?	F'attivitajiet oħra? In other activities?	<p>25. Dizabbiltajiet fit-tul</p> <p>Din il-persuna tbatr minn xi dizabbiltà jew handikapp fit-tul?</p> <p>Iktcb:</p> <p>1 = Iva 2 = Le</p> <p>Ara n-noti fil-paġna opposta</p> <hr/> <p>25. Long-term Limitations</p> <p>Does this person have any long-term disabilities or handicaps?</p> <p>Enter:</p> <p>1 = Yes 2 = No</p> <p>See notes on opposite page.</p>	<p>26. Polza tas-sigurta' fuq is-saħha?</p> <p>Din il-persuna hija koperta minn polza tas-sigurta' fuq is-saħha?</p> <p>Iktcb:</p> <p>1 = Iva 2 = Le</p> <hr/> <p>26. Private Health Insurance</p> <p>Is this person covered by a private HEALTH insurance policy?</p> <p>Enter:</p> <p>1 = Yes 2 = No</p>
Fid-dar? At Home?	L-iskola jew fix-xogħol? At School/Work?	F'attivitajiet oħra? In other activities?						
	1							
	2							
	3							
	4							
	5							
	6							

1 L-isem

Il-lista li qiegħda tintalab hawnhekk għandha lejli tas-26 ta' Novembru 1995

Hu hsieb li l-lista tkun tinkludi lill-membri kollha ta' persuni li m'humiex membri tal-familja iżda li qiegħdin barra minn Malta għal perjodu qasir

Ibda' l-lista tiegħek:

- jew b'isem ir-ragel jew il-mara fil-kaz ta' l-ill-membri ta' koppja li jgħixu flimkien.
- jew b'isem il-ġenitur/a fil-kaz ta' ġenitur/a m'uliedu/ha mhux mizzewġin
- inkella b'xi membru adult tal-familja li jgħ L-ewwel persuna fil-lista tingharaf bhala l-pei

Kompli l-lista tiegħek:

- b'isem il-mara jew ir-ragel jew isem il-me
- bl-ulied mhux mizzewġin tal-persuna nun
- b'xi persuni oħra, relatati jew le, mal-pers

KUNJOMIJET

Tikklixb il-kunjomijet tal-membri tal-familja jek numru 1. Iżda jekk hawnhekk toqghod persuna tal-persuna numru 1, itteb kunjomha

1. Name

The list being requested here should be as a November 1995.

Ensure that your list includes all the household not forget infants, small children, non-family persons who may, at present, be on a vacati

Begin your list with:

- either the husband, wife or either partner
- the parent where one parent lives with his daughter(s).
- If neither of the above applies, begin with The first person in the list will be the referenc

Continue your list with:

- the wife, husband or other partner of a cc
- the never married children of person 1.
- any other persons, related or not, to pers

SURNAMES

In drawing up your list, do not write down any that of person 1. However, if any person lives that of person 1, write down his/her surname

27. It-tipjip

Il-mistoqsijiet numru 27a u 27b qiegħdin isiru bil-għan li jingabar tagħrif dwar it-tipjip.

Biex twegebb għandek tagħzel waħda mit-tliet twegħbiet indikati taħt il-mistoqsija u inizzel in-numru ta' magenb l-għazla tiegħek li-ispażju indikat

It-tagħrif millub fil-taqsima 27b għandu jingħata minn dawk li għall-mistoqsija numru 27a wiegħbu li għadhom ipejpu.

27. Smoking

Questions 27a and 27b are intended to collect information on smoking habits.

In the space provided, ENTER the number against the alternative that describes your present smoking habits

The information that is being requested here needs to be supplied by persons who declare themselves as smokers in question 27a

28 Ix-xorb alkoholiku

Din il-mistoqsija hija mahsuba biex jingabar tagħrif fuq il-konsum tax-xorb alkoholiku. Dawk li jixorbu l-alkohol għandhom jagħtu l-'kwantita' medja ta' nbid, birra u spirti oħra li normalment jixorbu kull gimgħa.

28. Alcohol Consumption

Question 28 is intended to collect information on alcohol consumption. Respondents are requested to indicate the average amount of wine, beer and other spirits which they usually drink every week

<p>1. L-isem</p> <p>Nizzel isem il-persuni kollha li joqogħdu f'din il-dar. Ibdha' b'isem il-persuna ta' riferenza.</p> <p>Il-persuna ta' riferenza għandha tingħaraf bhala l-persuna numru 1.</p> <p>Ara n-noti fil-pagna opposta.</p> <p>.....</p> <p>1. Name</p> <p>Please give all the names of persons who usually live in this household beginning with the name of the reference person</p> <p>The reference person is being designated as person number 1</p> <p>See notes on opposite page.</p>	NO
	1
	2
	3
	4
	5
	6

<p>11- Tipij / Smoking</p> <p>27a. Qatt pejpet jew għadha tpejpet din il-persuna?</p> <p>Ikteb:</p> <p>1 = Qatt ma pejpet</p> <p>2 = Kienet tpejpet u waqfet</p> <p>3 = Għadha tpejpet.</p> <p>Ara n-noti fil-pagna opposta.</p> <p>.....</p> <p>27a. What is/was this person's smoking habit?</p> <p>Enter:</p> <p>1 = Never smoked</p> <p>2 = Smoked in the past and stopped</p> <p>3 = Still smoking.</p> <p>See notes on opposite page</p>		<p>28. Ixrob alkoholiku</p> <p>Kemm minn dawn ta' hawn taht, din il-persuna lixrob fil-gimgha?</p> <p>Tinsieix is-Sibt u l-Hadd.</p> <p>Ara n-noti fil-pagna opposta.</p> <p>.....</p> <p>28. Alcohol Consumption.</p> <p>How much, on average, does this person drink every week?</p> <p>Remember week-ends</p> <p>See notes on opposite page.</p>		
	<p>Inbid (lazzi)</p> <p>Wine (glasses)</p>	<p>Birra (flieksen zghar)</p> <p>Beer (small bottles)</p>	<p>Spiritu (grockkijiet)</p> <p>Spirits (lots)</p>	

1 L-isem

Il-lista li qiegħda trintalab hawnhekk għandha lejha tas-26 ta' Novembru 1995.

Hu hsieb li l-lista tkun tinkludi lil-membri kollha persuni li m'humiex membri tal-familja iżda li qiegħdin barra minn Malta għal perjodu qasir

Ibda' l-lista tiegħek:

☑ jew b'isem ir-ragel jew il-mara fil-kaz ta' l-mill-membri ta' koppja li jgħixu flimkien.

☑ jew b'isem il-ġenitur/ta fil-kaz ta' ġenitur/ta m'uledu/ha mhux mizzewġin.

☑ inkella b'xi membru adult tal-familja li jgħ L-ewwel persuna fil-lista li nqas b'halha l-per

Kompli l-lista tiegħek:

☑ b'isem il-mara jew ir-ragel jew isem il-me

☑ bl-uledd mhux mizzewġin tal-persuna nun

☑ b'xi persuni oħra, relatati jew le, mal-pers

KUNJOMLIJET

Tikkubx il-kunjomijiet tal-membri tal-familja jek numru 1. Iżda jekk hawnhekk toqgħod persuna dak tal-persuna numru 1, iktib kunjomha wk

1. Name

The list being requested here should be as a November 1995.

Ensure that your list includes all the household not forget infants, small children, non-family persons who may, at present, be on a vacati

Begin your list with:

☑ either the husband, wife or either partner

☑ the parent where one parent lives with his daughter(s).

☑ If neither of the above applies, begin with

The first person in the list will be the referenc

Continue your list with:

☑ the wife, husband or other partner of a cc

☑ the never married children of person 1.

☑ any other persons, related or not, to pers

SURNAMES

In drawing up your list, do not write down any that of person 1. However, if any person livir that of person 1, write down his/her surname

29. L-Attività ekonomika

Din il-mistoqsija hija mahsuba għal dawk li għalqu s-16 -il sena jew aktar biss.

Biex twieġeb din il-mistoqsija, aghžel il-twegħba mal-lista ta' hawn taht li tispjega l-attività ekonomika tiegħek fil-perjodu ta' bejn il-1 ta' Novembru u l-30 ta' Novembru 1995. Imbagħad iktib in-numru li hemm hdejn l-għażla tiegħek.

- 1 = konti impjegat/ta full-time (għal aktar minn 30 siegħa fil-gimgha)
- 2 = konti impjegat/ta part-time (għal siegħa jew aktar fil-gimgha)
- 3 = konti impjegat/ta fuq bazi full-time kif ukoll part-time
- 4 = konti nahdem għal rasi u nahdem lil haddiehor
- 5 = konti nahdem għal rasi iżda ma haddimix oħrajn
- 6 = konti nahdem għal rasi full-time u nahdem ma' haddiehor part-time
- 7 = konti qiegħed/qiegħda nisienna biex nibda impjeg li konti diga' accettajt
- 8 = konti qiegħed/qiegħda niftex ix-xogħol
- 9 = konti qiegħed/qiegħda iżda ma niftex xogħol
- 10 = konti qiegħed/qiegħda nisudja full-time
- 11 = konti qiegħed/qiegħda nisudja full-time u nahdem part-time
- 12 = ma slayx nahdem minhabba mard jew dizabbiltà' fit-tul
- 13 = konti iritrat/irritata mix-xogħol
- 14 = konti qiegħed/qiegħda niehu nsieb id-dar u l-familja
- 15 = konti qiegħed/qiegħda nahdem part-time u niehu hsieb id-dar u l-familja

29. Economic Activity

This question is intended for persons aged 16 years and over only.

In answering this question, choose the alternative from the following list that describes best your activity in the week between Monday the 20th November and Sunday the 26th November 1995. Then enter the number against the chosen alternative in the space provided

- 1 = Was working for an employer full time (more than 30 hours a week)
- 2 = Was working for an employer part time (one hour or more a week)
- 3 = Was working for employers on a full-time and part-time basis
- 4 = Was self-employed, employing other people
- 5 = Was self-employed, not employing other people
- 6 = Was self-employed on a full-time basis and working for an employer on a part-time basis
- 7 = Was waiting to start a job he/she had already accepted
- 8 = Was unemployed and looking for a job
- 9 = Was unemployed and not looking for a job
- 10 = Was at school or in other full-time education
- 11 = Was in full-time education and working part-time
- 12 = Was unable to work because of long-term sickness or disability
- 13 = Was retired from paid work
- 14 = Was looking after the home or family
- 15 = Was working part-time and looking after the home or family

31. L-impjeg

Din il-mistoqsija hija mahsuba għal dawk li għalqu s-16 -il sena jew aktar biss.

Il-mistoqsija toqgħod għall-impjegji full-time biss

Wieġeb din il-mistoqsija billi tagħti l-isem tal-impjeg full-time ta' kull persuna

Bhala eżempju, iktib:

- | | |
|---------------------------------|---------------------------------|
| - Kindergarten Assistant | - Għalliem/ta fi skola primarja |
| - Għalliem/ta ta' l-Universita' | - Infermiera |
| - Medical Laboratory Technician | - Accounting Clerk |
| - Data Entry Operator | - Machine Operator |
| - Hairdresser | - Naggar |
| - Bennej | - Sewwieq tal-trakk |
| - Sewwieq tax-xarabank | - Sewwieq tat-taxi |
| - Kennies | - Draughtsman |
| - Pilota ta' l-ajruplani | - Inginier civili |
| - Direttur ta' kumpannija | - Bidwi |
| - Sajjed | - Kuntistabbli |
| - Skrivan | - ecc. |

31. Occupation

This question is intended for persons aged 16 years and over only.

It refers to full-time jobs only.

In answering this question give the job title of each person who is employed on a full-time basis.

Enter, for example:

- | | |
|---------------------------------|--------------------------|
| - Kindergarten Assistant | - Primary School Teacher |
| - University Lecturer | - Nurse |
| - Medical Laboratory Technician | - Accounting Clerk |
| - Data Entry Operator | - Machine Operator |
| - Hairdresser | - Stone Dresser |
| - Builder | - Truck Driver |
| - Bus Driver | - Taxi Driver |
| - Refuse Collector | - Draughtsman |
| - Airline Pilot | - Civil Engineer |
| - Company Director | - Farmer |
| - Fisherman | - Police Constable |
| - Clerk | - etc |

<p>1. L-isem</p> <p>Nizzel isem il-persuni kollha li joqogħdu f'din il-dar. Ibdha' b'isem il-persuna ta' riferenza.</p> <p>Il-persuna ta' riferenza għandha tingharaf bhala l-persuna numru 1</p> <p>Ara n-noti fil-pagna opposta.</p> <p>.....</p> <p>1. Name</p> <p>Please give all the names of persons who usually live in this household beginning with the name of the reference person.</p> <p>The reference person is being designated as person number 1</p> <p>See notes on opposite page.</p>	<p>NO</p>	<p>29. L-Attività Ekonomika</p> <p>Kif kienet impjegata din il-persuna matul il-gimgha ta' bejn l-20 u s-26 ta' Novembru, 1995?</p> <p>Aqra l-ista ta' attivitajiet fit-tabella ta' fuq il-pagna opposta u aghzel dak li japplika ghalik. Imbagħad nizzel in-numru ta' magenb l-ghazla tiegħek.</p> <p>Għal persuni ta' 16 -il sena jew aktar biss.</p> <p>.....</p> <p>29. Economic activity</p> <p>What was this person doing in the week between the 20th and the 26th November 1995?</p> <p>Please read the activities list on the opposite page and ENTER the code that applies.</p> <p>For persons aged 16 years and over only.</p>	<p>30. Is-sigħat tax-xogħol fil-gimgha</p> <p>Kemm -il siegħa fil-gimgha normalment taħdem din il-persuna li-xogħol full-time u part-time tagħha?</p> <p>Tinkludix xi sigħat overtime.</p> <p>Għal persuni ta' 16 -il sena jew aktar biss.</p> <p>.....</p> <p>30. Hours worked per week</p> <p>How many hours per week does the person usually work in his/her full-time and/or part-time job?</p> <p>Do not count overtime</p> <p>For persons aged 16 years and over only.</p>		<p>Xogħol full-time Full-time job</p>	<p>Xogħol part-time Part-time job</p>	<p>31. Ix-xogħol</p> <p>X'tip ta' xogħol full-time kienet qiegħda tagħmel din il-persuna matul il-gimgha ta' bejn l-20 u s-26 ta' Novembru 1995?</p> <p>Aqra n-noti fil-pagna opposta.</p> <p>Għal persuni ta' 16 -il sena jew aktar biss.</p> <p>.....</p> <p>31. Occupation</p> <p>What kind of work was this person doing in his/her full-time job between the 20th and the 26th November 1995?</p> <p>See notes on opposite page.</p> <p>For persons aged 16 years and over only</p>	<p>Kodici għall-31</p> <p>Għall-uzu ufficjali. Tiktbix hawnhekk</p> <p>Codes for 31</p> <p>For official use only. Please do not fill in</p>
	1							
	2							
	3							
	4							
	5							
	6							

<p>1 L-isem</p> <p>Il-lista li qiegħda tintalab hawnhekk għandha lej l-tas-26 ta' Novembru 1995</p> <p>Hu hsieb li l-lista tkun tinkludi lil-membri koll' persuni li m'humiex membri tal-familja iżda li qiegħdin barra minn Malta għal perjodu qasir</p> <p>Ibda' l-lista tiegħek:</p> <ul style="list-style-type: none"> - jew b'toom ir ragel jew il mara fil-kaz ta' l mill-membri ta' koppja li għixu fl-inkien. - jew b'isem il-ġenitur/a fil-kaz ta' ġenitur/a m'uliedu/ha mhux mizzewġin. - inkella b'xi membru adult tal-familja li jgħ L-ewwel persuna fil-lista tingharaf bhala l-pai <p>Kompli l-lista tiegħek:</p> <ul style="list-style-type: none"> - b'isem il-mara jew ir-ragel jew isem il-me - bl-uled mhux mizzewġin tal-persuna nun - b'xi persuni oħra, relatati jew le, mal-pers <p>KUNJOMJIET</p> <p>Tiktibx il-kunjomijiet tal-membri tal-familja jek numru 1. Iżda jekk hawnhekk toqgħod persun dak tal-persuna numru 1, iktieb kunjomha wk</p> <hr/> <p>1. Name</p> <p><i>The list being requested here should be as a November 1995.</i></p> <p>Ensure that your list includes all the household not forget infants, small children, non family persons who may, at present, be on a vacati</p> <p>Begin your list with:</p> <ul style="list-style-type: none"> - either the husband, wife or either partner - the parent where one parent lives with his daughter(s). - If neither of the above applies, begin with The first person in the list will be the referenc <p>Continue your list with:</p> <ul style="list-style-type: none"> - the wife, husband or other partner of a cc - the never married children of person 1. - any other persons, related or not, to pers <p>SURNAMES</p> <p><i>In drawing up your list, do not write down any that of person 1. However, if any person livir that of person 1, write down his/her surname</i></p>	<p>32. L-isem ta' min ihaddem</p> <p>Din il-mistoqsija hija mahsuba għal dawk li għalqu s-16 -il sena jew aktar biss.</p> <p>L-isem ta' min ihaddem huwa meħtieġ fil-kaz ta' IMPJIEGI FULL-TIME BISS</p> <p>Aghli isem id-ditta, id-dipartiment tal-Gvern jew l-agenzija biss.</p> <p>Eżempji:</p> <ul style="list-style-type: none"> - A & B Co Ltd - Borg Group of Companies - Management Systems Unit Ltd - Malta Police - Armed Forces of Malta - Central Office of Statistics - Etc <p>Hawnhekk tagħtix indirizzi jew tagħrif iohor.</p> <p>Persuni li jahdmu fuq bażi <i>part-time</i> biss m'għandhom jagħtu ebda tagħrif hawnhekk</p> <p>Persuni li jahdmu għal rashom ma għandhom jagħtu ebda tagħrif hawnhekk.</p> <hr/> <p>32. Employer's Name</p> <p><i>This question is intended for persons aged 16 years and over only.</i></p> <p><i>This information is required in respect of FULL-TIME JOBS ONLY</i></p> <p><i>Here provide the employer's or the employing firm's, department's or agency's name only.</i></p> <p><i>For example:</i></p> <ul style="list-style-type: none"> - A & B Co Ltd. - Borg Group of Companies - Management Systems Unit Ltd - Malta Police - Armed Forces of Malta - Central Office of Statistics - Etc. <p><i>Do not include addresses or any other information</i></p> <p><i>Persons working on a part-time basis only are not to furnish any information whatsoever here.</i></p> <p><i>Persons who declare themselves to be self-employed should not provide any information here.</i></p>	<p>33. L-indirizz ta' min ihaddem</p> <p>Din il-mistoqsija hija mahsuba għal dawk li għalqu s-16 -il sena jew aktar biss.</p> <p>Il-tagħrif mitlub għandu jingħata fil-kaz ta' IMPJIEGI FULL-TIME BISS</p> <p>Għandu jingħata l-indirizz shih ta' min ihaddem.</p> <p>Eżempju.</p> <p>3 Triq ir-Repubblika, il-Belt VLT 01</p> <p>F' din il-taqsimta dawk li jahdmu għal rashom, il-bdiewa, is-sajjeda u oħrajn li ma jahdmux f'post fiss jew identifikabbli, ma għandhom jagħtu ebda tagħrif.</p> <hr/> <p>33. Employer's Address</p> <p><i>This section is intended for persons aged 16 years and over only.</i></p> <p><i>This information is required in respect of FULL-TIME JOBS ONLY</i></p> <p><i>The employer's full address is required here. For example</i></p> <p>3 Republic Street, Valletta VLT 01</p> <p><i>Self-employed persons, farmers, fishermen etc who do not operate from a fixed or an identifiable address should not provide any information whatsoever.</i></p>	<p>34. Is-settur ekonomiku</p> <p>Din il-mistoqsija hija mahsuba għal dawk li għalqu s-16 -il sena jew aktar biss.</p> <p>Il-tagħrif mitlub għandu jingħata fil-kaz ta' IMPJIEGI FULL-TIME BISS</p> <p>Spjegha tajjeb dak li jagħmel/tagħmel id-dipartiment, id-ditta, jew il-persuna li tadreru għal rasha.</p> <p>Eżempji.</p> <ul style="list-style-type: none"> - Kumpannija ta' l-accounts - Sptar - Skola primarja - Fabbrica tal-hwejġeg ta fuq - Kumpannija tal-bini - Kumpannija li tagħmel l-ghamara - Hanut taz-zraben - Supermarket - Bejjiegh tal-medicini bl-ingrossa - Ikkanda - Agenzija ta' konsulenza fil-informatika - Il-Bank Centrali - Il-Forzi Armati ta' Malta - Barnera tal-gebel għall-bini - Ministeru ta l-Affarijiet Barrann - Il-Korp tal-Pulizija - Kumpannija privata tas-sigurtà' - Id-Dockyard - Il-Freeport - Etc <hr/> <p>34. Industry</p> <p><i>This section is intended for persons aged 16 years and over only.</i></p> <p><i>This information is required in respect of FULL-TIME JOBS ONLY.</i></p> <p><i>Describe clearly what the employer, employing firm, department (or the persons if self-employed) makes or does</i></p> <p><i>For example</i></p> <ul style="list-style-type: none"> - Accounting Firm - Hospital - Primary School - Factory manufacturing outerwear - Construction firm - Joinery works - Retail shoe store - Supermarket - Wholesaler of pharmaceutical goods - Hotel - Information Technology Consulting agency - Central Bank - Armed Forces of Malta - Limestone quarry - Ministry of Foreign Affairs - Malta Police - Private Security Firm - Malta Drydocks - Malta Freeport - Etc
--	---	---	---

<p>1. L-isem</p> <p>Nizzel isem il-persuni kollha li joqogħdu f'din il-dar. Ibdta' b'isem il-persuna ta' riferenza.</p> <p>Il-persuna ta' riferenza għandha tingħaraf bhala l-persuna numru 1.</p> <p>Ara n-noti fil-pagna opposta.</p> <p>.....</p> <p>1. Name</p> <p>Please give all the names of persons who usually live in this household beginning with the name of the reference person.</p> <p>The reference person is being designated as person number 1</p> <p>See notes on opposite page.</p>	<p>NO</p>	<p>32. L-isem ta' min ihaddem</p> <p>Ma' min kienet impjegata <i>FULL-TIME</i> din il-persuna fil-gimgha ta' bejn l-20 u s-26 ta' Novembru 1995?</p> <p>Aghi isem id-ditta, id-dipartiment tal-Gvern jew l-agenzija li haddmitek matul il-gimgha msemmija</p> <p>Ara n-noti fil-pagna opposta..</p> <p>Għal persuni ta' 16 -il sena jew aktar biss.</p> <p>.....</p> <p>32. Employer's Name</p> <p>For whom did this person work <i>FULL-TIME</i> between the 20th and the 26th November 1995?</p> <p>Please give the name of the employing firm, Government department or agency.</p> <p>See notes on opposite page.</p> <p>For persons aged 16 years and over only</p>	<p>33. L-indirizz ta' min ihaddem</p> <p>Aghi l-indirizz sħih tad-ditta, tad-dipartiment tal-Gvern jew ta' l-agenzija li magħtha kienet impjegata <i>FULL-TIME</i> din il-persuna bejn l-20 u s-26 ta' Novembru 1995</p> <p>Ara n-noti fil-pagna opposta.</p> <p>Għal persuni ta' 16 -il sena jew aktar biss.</p> <p>.....</p> <p>33. Employer's Address</p> <p>Please give the full address of the firm, Government department or agency, with whom this person was employed <i>FULL-TIME</i> between the 20th and the 26th November 1995</p> <p>See notes on opposite page</p> <p>For persons aged 16 years and over only.</p>	<p>Kodici għat-32/33</p> <p>Għall-uzu ufficjali biss. Tiktibx hawnhekk.</p> <p>.....</p> <p>Codes for 32/33</p> <p>For official use only. Please do not fill in.</p>	<p>34. Is-Settur Ekonomiku</p> <p>Iddeskrivi l-tip ta' attivita' kummercjali, l-industrija jew is-servizz li liha/fih hadmet <i>FULL-TIME</i> din il-persuna bejn l-20 u 26 ta' Novembru 1995.</p> <p>Ara n-noti fil-pagna opposta</p> <p>Għal persuni ta' 16 -il sena jew aktar biss.</p> <p>.....</p> <p>34. Industry</p> <p>Describe clearly the kind of business, industry or service in which this person was employed full-time between the 20th and the 26th November 1995.</p> <p>See notes on opposite page.</p> <p>For persons aged 16 years and over only</p>	<p>Kodici għall-34</p> <p>Għall-uzu ufficjali biss. Tiktibx hawnhekk</p> <p>.....</p> <p>Codes for 34</p> <p>For official use only. Please do not fill in.</p>
	1					
	2					
	3					
	4					
	5					
	6					

1 L-isem

Li-lista li qiegħda tintalab hawnhekk għandha tejj tas-26 ta' Novembru 1995.

Hu hsieb li l-lista tkun tinkludi lil-membri kollji persuni li m'humex membri tal-familja iżda li qiegħdin barra minn Malta għal perjodu qasir

Ibda' l-lista tiegħek:

- 1 jew b'isem ir-raġel jew il-mara fil-kaz ta' l-mill-membri ta' koppja li jgħixu flimkien
- 2 jew b'isem il-ġenitur/a fil-kaz ta' ġenitur/a m'uledu/ha mhux mizzewġin.
- 3 inkella b'xi membru adult tal-familja li jgħ L-ewwel persuna fil-lista tingharaf bhala l-pei

Kompli l-lista tiegħek:

- b'isem il-mara jew ir-raġel jew isem il-me
- bl-uled mhux mizzewġin tal-persuna nun
- b'xi persuni oħra, relatati jew le, mal-pers

KUNJOMJIET

Tiktibx il-kunjomijiet tal-membri tal-familja jek numru 1. Iżda jekk hawnhekk toqgħod persunak tal-persuna numru 1, iktibx kunjomijha wkoll.

1. Name

The list being requested here should be as a November 1995.

Ensure that your list includes all the household not forget infants, small children, non-family persons who may, at present, be on a vacati

Begin your list with:

- either the husband, wife or either partner
- the parent where one parent lives with his daughter(s).
- if neither of the above applies, begin with The first person in the list will be the referenc

Continue your list with:

- the wife, husband or other partner of a cc
- the never married children of person 1.
- any other persons, related or not, to pers

SURNAMES

In drawing up your list, do not write down any that of person 1. However, if any person livr that of person 1, write down his/her surname

35. Il-vjaġġ lejn il-post tax-xogħol jew ta' l-istudju

Din l-informazzjoni qiegħda tintalab minn persuni li għalqu s-16 -il sena jew aktar biss.

Il-tagħrif millub għandu jingħata dwar IL-VJAĠĠ LEJN il-post tax-xogħol jew ta' l-istudju biss. Tagħrif dwar il-vjaġġ lura ma għandux jingħata.

Dawk il-persuni li għandhom impjeg komm full time kif ukoll part time għandhom jagħtu l tagħrif millub dwar il vjaġġ tagħhom lejn il post tax-xogħol full-time biss

Dawk il-persuni li għandhom impjeg part-time biss għandhom jagħtu l-tagħrif millub dwar il-vjaġġ lejn il-post tax-xogħol part-time biss.

Dawk il-persuni li ma jżawx xi mezz ta' trasport minhabba li huma qiegħda, għax ma jahdmux jew għax qiegħdin id-dar, għandhom ihallu din il-taqsisma vojta. Aqħti l-tagħrif millub billi tadherz mil-lista ta' hawn taht dik il-tweqba li lispjegat tajeb il-mezz ta' trasport li int i tuza biex tkopri l-itwal parti mill-vjaġġ lejn il-post tax-xogħol jew ta' l-istudju. Imbagħad iktib in-numru ta' hdejn l-għazla tiegħek.

- 1 = it-trasport pubbliku (li jinkludi s-servizzi tal-privates u tal-minibuses)
- 2 = il-karrozza (bhala sewwieq)
- 3 = il-karrozza (bhala passiggier)
- 4 = it-trakk (bhala sewwieq)
- 5 = it-trakk (bhala passiggier)
- 6 = il-mutur (bhala sewwieq)
- 7 = il-mutur (bhala passiggier)
- 8 = bir-rota
- 9 = bil-mixi
- 10 = ma nivjaggax (lejn il-post tax-xogħol huwa mad-dar)

35. Daily Journey to place of work or study

This information is required from persons aged 16 years and over only.

Information is required in respect of the OUTWARD JOURNEY ONLY. Information on the return journey is not required.

Persons in full-time employment should provide information in respect of their outward journey to their full-time place of work only even though they might have a part-time job as well.

Persons having part-time employment only should provide information in respect of their outward journey to their part-time place of work.

Those persons who do not use any transport because of unemployment, home duties, etc. should leave the space against their name blank

In order to furnish the information required here, please choose from the following list the alternative that indicates best the means of transport, if any, that is used to cover the longest part of a person's daily outward journey to the place of work or study. Then enter the number against the chosen alternative in the space provided.

- 1 = Public transport (includes unscheduled bus services and mini-buses)
- 2 = car (driver)
- 3 = car (passenger)
- 4 = truck (driver)
- 5 = truck (passenger)
- 6 = motorcycle (rider)
- 7 = motorcycle (passenger)
- 8 = bicycle
- 9 = on foot
- 10 = no travel (where work place is the same as home)

36. Id-dhul

Id-dhul kollu minn kull sors u qabel ma tinaqqas it-taxxa u l-kontribuzzjoni għas-sigurtà soċjali għandu jingħata f'din il-taqsisma. Id-dhul għandu jingħata jew fuq bażi ta' gimgha inkella fuq bażi ta' xahar.

1. Biex wieħed jasal għad dhul kollu tiegħu, għandu jgħoddi-

- id-dhul kollu mill-impjeg full-time u/jew part-time qabel ma tinaqqas it-taxxa u l-kontribuzzjoni għas-sigurtà soċjali;
- xi dhul ieħor bħal bonuses, pensjonijiet u assistenza soċjali oħra ta' kull tip,
- l-imghaxijiet kollha fuq id-depoziti fil-banek qabel ma tihallas it-taxxa;
- id-dividendi fuq xi investimenti qabel ma tihallas it-taxxa;
- xi dhul ieħor minn sorsi oħra.

2. Kull persuna hija libera li tagħzel jekk tagħtix il-tagħrif millub fuq bażi ta' gimgha inkella ta' xahar. Iżda huwa importanti hafna li jew wahda inkella l-oħra jigu magħzula.

3. Dawk li għandhom dhul minn sorsi differenti, l-aħjar li jagħmlu hu li jgħoddu d-dhul kollu tagħhom fuq bażi ta' sena u mbagħad jiddividu r-riżultat jew bin-numru 52 inkella bin-numru 12 u jagħtu l-tagħrif millub fuq bażi ta' gimgha inkella fuq bażi ta' xahar.

36. Gross Income

Information on each person's average gross weekly or monthly income from all sources and before deducting income tax and social security contributions is required in this section.

1. To arrive at a person's gross income, add.

- the gross income from full-time and part-time jobs before deducting income tax and social security contributions.
- any income in the form of bonuses, pensions, and other social assistance of whatever nature;
- interests on bank deposits before deducting income tax,
- any dividends on investments before deducting income tax;
- any other income from any other source.

2. It is up to each person to decide whether to provide the required information on a weekly or a monthly basis. However, it is important that either one or the other is chosen.

3. For persons having different sources of income, it is advisable that they first arrive at their gross yearly income and then divide this total either by 52 or else by 12 in order to give the required information on either a weekly or a monthly basis.

<p>1. L-isem</p> <p>Nizzel isem il-persuni kollha li joqogħdu f'din il-dar. Ilda' b'isem il-persuna ta' riferenza.</p> <p>Il-persuna ta' riferenza għandha tingharaf bhala l-persuna numru 1.</p> <p>Ara n-noti fil-pagna opposta.</p> <p>1. Name</p> <p>Please give all the names of persons who usually live in this household beginning with the name of the reference person</p> <p>The reference person is being designated as person number 1</p> <p>See notes on opposite page.</p>	<p>NO</p>
	1
	2
	3
	4
	5
	6

<p>35. Il-vjaġġ lejn il-post tax-xogħol jew ta' l-istudju</p> <p>Indika l-mézz ta' trasport li din il-persuna normalment tuza biex tkopri l-itwal parti tal-vjaġġ tagħha LEJN il-post tax-xogħol jew ta' l-istudju.</p> <p>Ara n-noti fil-pagna opposta.</p> <p>Għal persuni ta' 16 -il sena jew aktar biss.</p> <p>35. Daily Journey to place of work or study</p> <p>Please show how the longest part, by distance, of this person's daily OUTWARD journey to the place of work or study is normally made.</p> <p>See notes on opposite page.</p> <p>For persons aged 16 years and over only.</p>	<p>36. Id-dhul</p> <p>Aghli l-medja tad-dhul teghek fil-gimgha jew fix-xahar minn kull sors qabel ma tnaqqas it-taxxa fuq id-dhul u l-kontribuzzjonijiet għas-sigurtà soċjali.</p> <p>Ara n-noti fil-pagna opposta.</p> <p>Għal persuni ta' 16 -il sena jew aktar biss.</p> <p>36. Gross Income</p> <p>Indicate your gross average weekly or monthly income from all sources before deducting income tax and social security contributions</p> <p>See notes on opposite page.</p> <p>For persons aged 16 years and over only.</p>	
	<p>Fil-gimgha Weekly Lm</p>	<p>Fix-xahar Monthly Lm</p>

1 L-isem

Il-lista li qiegħda tintalab hawnhekk għandha lejha tas-26 ta' Novembru 1995.

Hu hsieb li l-lista tkun tinkludi lil-membri kollha ta' persuni li m'humx membri tal-familja iżda li qiegħdin barra minn Malta għal perjodu qasir.

Ibda' l-lista tiegħek:

- jew b'isem ir-ragel jew il-mara fil-kaz ta' l-ill-membri ta' koppja li jgħixu flimkien.
- jew b'isem il-ġenitur/a fil-kaz ta' ġenitur/a m'uledu/ha mhux mizzewġin.
- inkella b'xi membru adult tal-familja li jgħi l-ewwel persuna fil-lista tingharaf bhala l-pers

Kompli l-lista tiegħek:

- b'isem il-mara jew ir-ragel jew isem il-me
- bl-ulied mhux mizzewġin tal-persuna nun
- b'xi persuni oħra, relatati jew le, mal-pers

KUNJOMIJET

Tuktibx il-kunjomijiet tal-membri tal-familja jekk numru 1. Iżda jekk hawnhekk toqgħod persuna dak tal-persuna numru 1, iktibx kunjomha w

1. Name

The list being requested here should be as of November 1995.

Ensure that your list includes all the household members, not forget infants, small children, non-family persons who may, at present, be on a vacati

Begin your list with:

- either the husband, wife or either partner
- the parent where one parent lives with his daughter(s).
- If neither of the above applies, begin with

The first person in the list will be the referenc

Continue your list with:

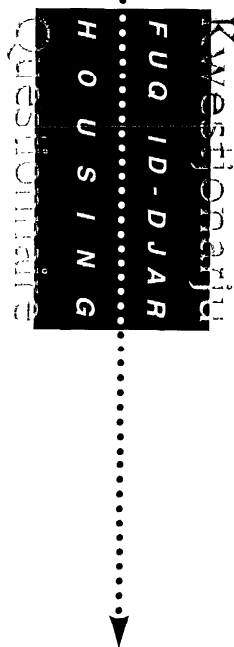
- the wife, husband or other partner of a cc
- the never married children of person 1.
- any other persons, related or not, to pers

SURNAMES

In drawing up your list, do not write down any surnames of person 1. However, if any person lives with person 1, write down his/her surname



<p>1. L-isem</p> <p>Niżżeft isem il-persuni kollha li joqogħdu f'din il-dar. Ibdja b'isem il-persuna ta' riferenza</p> <p>Il-persuna ta' riferenza għandha tingharaf bhala l-persuna numru 1.</p> <p>Ara n-noti fil-pagna opposta.</p> <p>.....</p> <p>1. Name</p> <p>Please give all the names of persons who usually live in this household beginning with the name of the reference person.</p> <p>The reference person is being designated as person number 1</p> <p>See notes on opposite page.</p>	<p>NO</p>
	1
	2
	3
	4
	5
	6



<p>H1 It-tip ta' dar Definizzjoni tad-diversi tipi ta' djar:</p> <p>(a) Dar <i>terraced</i> dar li tmiss ma' strutturi ohra fuq iz-zewg naha taghha.</p> <p>(b) Dar <i>semi-detached</i> dar li tmiss ma' strutturi ohra fuq naha wahda biss.</p> <p>(c) Dar <i>fully-detached</i> dar li ma tmiss ma' l-ebda struttura ohra u li hija mdawra bil-btehi jew bil-gonna minn kullimkien.</p> <p>(d) Terran: dar li-livell tat-triq, li ghandha entratura separata ghal fuq il-triq, u li jista' jkollha strutturi ohra fuqha.</p> <p>(e) Mezzanin: dar li-ewwel sular, li ghandha entratura separata ghal fuq il-triq u bi strutturi ohra taħha, fil-livell tat-triq (garaxx/ijiet jew terran).</p> <p>(f) Appartament/flat: dar li l-entratura separata taghha taghti ghal kundur, pian jew tarag komuni.</p> <p>(g) Kantina/basement flat: struttura jew dar li qiegħda metru jew aktar taħt il-livell tat-triq, li ghandha entratura separata ghal fuq il-triq, u li ghandha strutturi ohra fuqha.</p> <p>H1 Type of dwelling/house Definitions of types of housing units.</p> <p>(a) Terraced House: a dwelling that is attached to other structures on both sides</p> <p>(b) Semi-detached house: a dwelling that is attached to other structures on one side only.</p> <p>(c) Fully-detached house: a dwelling that does not touch any other structures and with yard and gardens all around</p> <p>(d) Ground floor tenement (terran): a dwelling at ground floor level, with a separate entrance accessible from the street and either with or without other structures overlying</p> <p>(e) Maisonette (mezzanin): a first floor dwelling with a separate entrance accessible from the street and other structures underlying (garages or terran)</p> <p>(f) Apartment/flat: a dwelling with a separate entrance accessible from a common passage, landing or stairway.</p> <p>(g) Cellar/basement flat: a dwelling that is one metre or more below street level, with separate entrance on street and other structures overlying</p>	<p>H3.2 Il-kera Ghandu jinghata l-ammont shih ta' kera li jthallas ghal djar mikrja bil-ghamara jew minghajr ghamara</p> <p>H3.2 Rent <i>The full amount of rent paid by tenants in respect of furnished or unfurnished dwellings is required.</i></p>	<p>H4.1 In-numru ta' kmamar Aqra sewwa dan li gej qabel tagħti l-tagħrif millub fil-mistoqsijiet min-numru H4.1 sa numru H4.5.</p> <p>(a) X'nifhmu b'kamra? Kamra hija spazju li huwa mdawwar bil-titan u b'saqaf fuqhom u li huwa kbir bizzzejjed biex tesa' sodda ghal persuna adulta. Spazji bhal dawn jiqiesu bhala kamra jekk ikunu mill-anqas 4 metri kwadri u li s-saqaf tagħhom ikun mill-anqas 2 metri għoli.</p> <p>(b) Biex tasal għan-numru totali ta' kmamar għodd:</p> <ul style="list-style-type: none"> - il-kcina - il-kmamar tas-sodda normali - il-kamra ta' f'ikel - il-kamra tas-salott - il-kmamar abitabbli fil-kantina/basement - xi spazji ohra li jintuzaw jew li jstgħu jintuzaw għall-abitazzjoni. <p>Tghoddx:</p> <ul style="list-style-type: none"> - il-kcina iz-zghira (kitchenette) - il-kunduri - il-veranda - il-kamra tal-hasil tal-hwejjeg - l-intrata - il-kmamar tal-banju, tax-shower u tat-toilet <p>Il-kunduri, il-veranda, l-intrata u l-kmamar tal-banju, tax-shower u tat-toilet ma għandhomx jinghaddu anki jekk id-daqs tagħhom ikun ta' 1 metru kwadri jew aktar.</p> <p>H4.1 Number of rooms <i>Read carefully the following before providing the information requested in questions H4.1 to H4.5.</i></p> <p>(a) What is a room? A room is a space that is enclosed by walls and with a ceiling, that is large enough to hold a bed for an adult (4 square metres at least) and whose height is at least 2 metres</p> <p>(b) In arriving at the total number of rooms, count:</p> <ul style="list-style-type: none"> - kitchen - normal bedrooms - dining room/s - living room/s - habitable rooms in cellar/basement - other separate spaces used or intended for habitation <p>Exclude.</p> <ul style="list-style-type: none"> - kitchenettes - corridors - verandahs - halls - wash room (laundry room) - bathrooms, showers, toilets <p>The latter group (except in the case of the kitchenette) should be excluded even if their size is 4 square metres or larger.</p>	<p>H5 Meta tlesta l-bini F'din il-laqsimha għandu jgħid il-mument li jkollha l-bini meta tlesta biex jidher li għad li jkollha l-bini, u mhux iz-zmien meta saru xi bidiet oħrajn fih.</p> <p>Jekk is-sena meta l-bini tlesta m'hux magħrufa, aghi s-sena bejn wieħed u ieħor.</p> <p>H5 Completion of Building <i>In this section, the period in which the building was completed for habitation and not the time of any later additions or conversions should be marked</i></p> <p><i>If the year in which the building was completed is not known, provide a best estimate</i></p>
--	--	--	---

H1. Aghmel salib X fil-kaxxa ta' hdejn id-deskrizzjoni li tindika l-ahjar it-tip ta' din dar.

H1. Please tick X the box that describes best this type of dwelling.

- Dar terraced / Terraced house 1
- Dar semi-detached / Semi-detached house 2
- Razzelti irranġat / Converted Farmhouse 3
- Dar fully-detached / Fully-detached house 4
- Terran / Ground floor tenement 5
- Mezzanin / Maisonette 6
- Appartment/Flat / Apartment/Flat 7
- Kerreġja / Suite of rooms forming part of a housing unit 8
- Hazzett / Farmhouse 9
- Jott / Yacht 10
- Kantina/basement flat / Cellar/basement flat 11

Ghall-uzu ufficcjali
For official use

Dar oħra - specifika
Other specify

H2. Din il-familja: : H2. Is this household :
1 = tgħix wehda f'din id-dar? : 1 = Living alone in this dwelling?
2 = tgħix ma' familja/i oħra : 2 = Sharing this dwelling with
f'din id-dar? : other households?
Ikteb 1 jew 2 hawnhekk Enter 1 or 2 here

H3.1 Din id-dar hija: : H3.1 Is this dwelling:
1 = proprjeta' tal-persuna ta' : 1 = Owned by the reference
riferenza jew ta' xi membru/i : person or members
teħori/oħra tal-familja? : of the household?
2 = miknija bl-ghamara? : 2 = Rented furnished?
3 = miknija mingħajr ghamara? : 3 = Rented unfurnished?
4 = uzata mingħajr ilas? : 4 = Used free-of-charge?
Ikteb 1, 2, 3 jew 4 hawnhekk Enter 1, 2, 3 or 4 here

H3.2 Jekk din id-dar hija : H3.2 If this dwelling is
miknija, agħti l-ammont ta' : rented, give the amount of
kera li jthallas fis-sena : rent paid annually in Malta
f' Liri Maltin biss Liri only

H4.1 Kemm hawn kmamar : H4.1 How many rooms are
f'din id-dar? : there in this dwelling?
Għodd ukoll dawk li huma għall-uzu : Include those used for business or
professjonali jew kummerċjali. : professional purposes as well

H4.2 Kemm minn dawn il- : H4.2 How many of these
kmamar huma kmamar : rooms are bedrooms?
tas-sodda?

H4.3 Kemm hawn kċejjen : H4.3 How many kitchens are
f'din id-dar? : there in this house?

H4.4 Agħti n-numru ta' : H4.4 Indicate the number of
kmamar f'din id-dar li : rooms in this dwelling that
qegħdin għall-uzu : are used for business or
professjonali jew : professional purposes.
kummerċjali.

H4.5 Hawn kċina żghira : H4.5 Is a kitchenette
(kitchenette) f'din id-dar? : available?
1 = Iva : 1 = Yes
2 = Le : 2 = No
Ikteb 1 jew 2 hawnhekk Enter 1 or 2 here

H5. Indika l-perjodu ta' meta tlesta għall-abitazzjoni l-bini ta' din id-dar. Aghmel X fejn hemm bżonn.

H5. Indicate the period in which the building containing this dwelling was completed for habitation. Please tick X.

- 1920 jew qabel /or before 1
- 1921 - 1945 2
- 1946 - 1960 3
- 1961 - 1970 4
- 1971 - 1990 5
- 1981 - 1985 6
- 1986 - 1990 7
- 1991 - 1995 8

H6 Agħti n-numru ta' kmamar : H6 Give the number of
tal-banju/showers/toilets li : bathrooms / showers / toilets
hemm f'din id-dar. : in this dwelling.

In-numru tal-kmamar : Number of bathrooms /
tal-banju/showers: showers:

In-numru totali ta' vaski tal-toilet, : Number of toilet basins including
inklużi davik li qegħdin li- : those installed in
kmamar tal-banju u showers: bathrooms/showers:

H7.1 X'sistema ta' toilet : H7.1 What type of toilet
qiegħda tintuża? : system is available?

1 = toilet li jaldem dis-sistema tiush? : 1 = Flush toilet?
2 = toilet mingħajr is-sistema tiush? : 2 = Non-flush toilet?

Ikteb 1 jew 2 hawnhekk Enter either 1 or 2 here

H7.2 Dan it-toilet : H7.2 Is this toilet :

1 = jintuza minn familja : 1 = used by one
wahda biss? : household only?
2 = jintuza minn aktar minn : 2 = shared by more than one
familja wahda? : household?

Ikteb 1 jew 2 hawnhekk Enter either 1 or 2 here

H9.3 Il-Garaxx

(a) Garaxx jinghad li qiegħed mad-dar jekk dan ikun jifforma parti integrali mill-istruttura tad-dar. Ghaldaqslant garaxx bhal dan normalment ikun jew magenb inkella taħt id-dar.

(b) Garaxx komuni taħt blokk ta' appartamentili għandu jltqies bhala li qiegħed mad-dar.

H9.3 Garage

(a) A garage is said to be "attached to the house" if it is an integral part of the house's structure. Such a garage would normally be either adjacent to or immediately below the house.

(b) A communal garage beneath a block of flats should be classified as being "attached to the house".

H8. X'sistema ta' drenaġġ ghandha din id-dar? : **H8. What type of sewage disposal system is available to this dwelling?**
 1 = it-toilet huwa mqabbad mas-sistema tad-drenaġġ pubblika? : 1 = Toilet empties into public main sewage system?
 2 = it-toilet jibattal għat go fossa? : 2 = Toilet empties into a cesspool?

Ikteb 1 jew 2 hawnhekk Enter either 1 or 2 here

H9.1 Hemm garaxx għall-użu tal-membri ta' din il-familja? : **H9.1 Is a garage available to any member/s of this Household?**
 1 = Iva 2 = Le : 1 = Yes 2 = No

Ikteb 1 jew 2 hawnhekk Enter either 1 or 2 here

Jekk it-tveġiba hija LE, aqbez il-mistoqsjet numru H9.2, H9.3, H9.4 u H9.5 : If the answer is NO ignore questions H9.2, H9.3, H9.4 and H9.5.

H9.2 Aghti n-numru ta' garaxxijiet li qeghdin għall-użu tal-membri ta' din il-familja : **H9.2 Give the number of garages that are available to all the members of this Household**

H9.3 Dan/dawn il-garaxx/ijiet: : **H9.3 Is/Are this/these garage/s:**
 1 = qeghdin imissu mad dar? : 1 = attached to the house?
 2 = mhumiex (ma jmissux) mad-dar? : 2 = not attached to the house?

Ikteb 1 jew 2 hawn hekk Enter 1 or 2 here

H9.4 Dan/dawn il-garaxx/ijiet jintuża/w għall-karrozzaj? : **H9.4 Is/Are this/these garage/s used to park cars?**
 1 = Iva 2 = Le : 1 = Yes 2 = No

Ikteb 1 jew 2 hawnhekk Enter either 1 or 2 here

H9.5 Aghti n-numru ta' vetturi li l-membri ta' din il-familja normalment idahhlu f'dan/dawn il-garaxx/ijiet. : **H9.5 Give the number of car/s that the member/s of this household usually park/s in this/these garage/s**

H10. Liema mill-oġġetti ta' hawn taht qeghdin għall-użu ta' membru/i ta' din il-familja?
H10. Are any of the following available to all or any member/s of this household?

Aghmel fejn hemm bżonn.
 Please tick the boxes that apply.

- servizz tat-telefon fiss / Fixed telephone service 1
- servizz tat-telefon mobile / Mobile telephone service 2
- makna tal-fax / Fax machine 3
- Kompjuter personali bil-modem li huwa mqabbad ma' linja tal-telefon / A personal computer that is linked to a telephone line through a modem 4

H11. Kemm minn kull tip ta' apparat tat-tisjir li jidher fil-lista ta' hawn taht ghandha din il-familja? : **H11. How many of each of the following types of cooking equipment is/are available to this household?**
 IKTEB numru fil-kaxxa/i ta' hdejn l-oġġetti li ghandha din il-familja. Jekk hemm xi oġġetti li l-familja m'għandhiex minnu, ikteb '0' fil-kaxxa ta' hdejn dak l-oġġett.

- Kucinera/spiritiera Stove
- Hot Plate Hot Plate
- Cooker tal-gass Gas Cooker
- Hob Hob
- Cooker ta' l-elettriku Electric Cooker
- Form Microwave Microwave Oven

H12. Kemm minn kull oġġett li jidher fil-lista ta' hawn taht ghandha din il-familja? : **H12. How many of each of the following items is/are available to this household?**
 IKTEB numru fil-kaxxa/i ta' hdejn l-oġġetti li ghandha din il-familja. Jekk hemm xi oġġetti li l-familja m'għandhiex minnu, ikteb '0' fil-kaxxa ta' hdejn dak l-oġġett.

- sink tal-kcina Kitchen sink
- Refrigerator Refrigerator
- Freezer Freezer
- makna tal-hasil tal-platt Dishwasher
- water heater ta' l-elettriku Electric water heater
- water heater tal-gass Gas water heater
- solar water heater Solar water heater

H13. Kemm minn kull oġġett li jidher fil-lista ta' hawn taht ghandha din il-familja? : **H13. How many of each of the following items/scis/are available to this household?**
 IKTEB numru fil-kaxxa/i ta' hdejn l-oġġetti li ghandha din il-familja. Jekk hemm xi oġġetti li l-familja m'għandhiex minnu, ikteb '0' fil-kaxxa ta' hdejn dak l-oġġett.

- fann ta' l-elettriku Electric fan
- sistema centrali ta' l-arja kundizzjonata Central air-conditioner
- apparat tal-arja kundizzjonata (bil-wiehed) Air conditioning (unit/s)
- heater tal-pitrolju Paraffin heaters
- heater tal-gass Gas heaters
- heater ta' l-elettriku Electric heaters
- Fireplace Fireplace

H14. Kemm mill-oggetti tad-dar li jidhru fil-lista ta' hawn taht ghandha din il-familja? IKTEB numru fil-kaxxa/i ta' hdejn l-oggett li ghandha din il-familja. Jekk hemm xi oggett li l-familja m'ghandhiex minnu, ikteb '0' fil-kaxxa ta' hdejn dak l-oggett.

H14. How many of each of the following appliances is/are available to this household? ENTER a number in the box/es against the available item/s. If none is/are available, ENTER '0'

makna tal-hasil	<input type="text"/>	Washing Machine
Tumble Dryer	<input type="text"/>	Tumble Dryer
Spin Dryer	<input type="text"/>	Spin Dryer
Dehumidifier	<input type="text"/>	Dehumidifier

H16. Kemm mit-tip ta' vetturi li jidhru hawn taht qeghdin ghall-uzu privat tal-membri/i ta' din il-familja? Il-vetturi uzati mhux bilfors ikunu proprjeta' tal-membri/i tal-familja IKTEB numru fil-kaxxa ta' hdejn kull tip ta' vettura.

H16. How many of the following motor vehicles are available for private use (owned or not owned) by any of the members of this household? Enter the number of each in box against each item.

karrozza/i	<input type="text"/>	Car/s
muturi/i	<input type="text"/>	Motorcycle/s
vann/ijiet	<input type="text"/>	Van/s
trakk/ijiet	<input type="text"/>	Truck/s
Tip ta' vettura/i ohra minbarra dawk imsemmijn hawn fuq.	<input type="text"/>	Other type of motor vehicle apart from above

H15. Kemm minn kull oggett li jidher fil-lista ta' hawn taht ghandha din il-familja? IKTEB numru fil-kaxxa/i ta' hdejn l-oggett li ghandha din il-familja. Jekk hemm xi oggett li l-familja m'ghandhiex minnu, ikteb '0' fil-kaxxa ta' hdejn dak l-oggett.

H15. How many of each of the following items is/are available to this household? ENTER a number in the box/es against the available item/s. If none is/are available, ENTER '0'

Kompiuter Personali	<input type="text"/>	Personal Computer
sett tat-televizjoni abjad u iswed	<input type="text"/>	Black & White TV set
sett tat-televizjoni tal-kulur	<input type="text"/>	Colour TV set
Video Camera	<input type="text"/>	Video Camera
Video Cassette Player	<input type="text"/>	Video Cassette Player
Satellite Dish Antenna	<input type="text"/>	Satellite Dish Antenna
apparat tal-Hi-Fi	<input type="text"/>	Hi-Fi Equipment

H17. Aghtu n-numru ta' dgħajjes li l-membri/i tal-familja jistgħu jagħmlu uzu minnhom għal-mogħdija taz-żmien.

H17. Indicate the number/s of pleasure boat/s that are available for use by any member/s of this household?

H18. Il-membri/i ta' din il-familja għandu/ha/għandhom post (proprjeta' tiegħu/ha/taġħom, bil-keira jew għall-uzu b'xejn) tas-sajf?

H18. Is a summer residence available (owned, rented, free accommodation) to the member/s of this Household?

1 = Iva 2 = Le

1 = Yes 2 = No

IKTEB 1 jew 2 hawnhekk

Enter either 1 or 2 here